



The IQ Designer feature is an amazing tool that allows the sewist to create embroidery designs right in the machine. Imported artwork or shapes created in the workspace easily transform into embroideries with a wide variety of stitch types and patterns. Creative ideas change into amazing projects right in the machine. Use this step-by-step guide to transform artwork into a linear design and in-the-hoop Eyeglass Case project. Use this

project to sharpen your skills or just follow the instructions to create a linear design. These instructions are for the Baby Lock Altair, but will work in similar machines.

Supplies

- o Eyeglass image (included in handout or your own)
- o Kraft Tex – (1) 8 ½" by 8 ½" piece (can be embellished with paint or ink)
- o Fabric – (2) 10" squares of cotton quilting fabric
- o Lightweight Fusible Batting – (1) 10" square
- o Medium Tearaway Stabilizer – (2) 15" by 15" pieces to fit into 9 ½" by 9 ½" hoop
- o Spray Adhesive
- o Embroidery Thread and Embroidery Bobbin Thread
- o All Purpose Sewing Thread
- o Rotary Cutter, Mat and Ruler
- o Wonder Clips
- o Small Iron
- o Appliqué Scissors for trimming

Instructions

The image used in this project is included on the last page. Any linear design will work for this project. For best results, select a line art image such as a “coloring book” graphic. Transfer the design from a mobile device camera into the IQ Designer workspace via the IQ Positioning app in either printed form or from an image file stored on the device.

Using a Printed Image

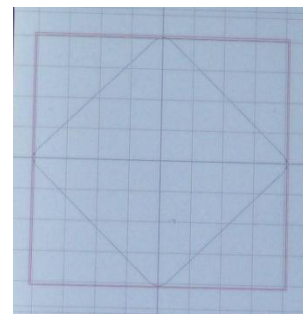
To use the image included with this handout, print the last page using the “good” or “best” print settings for a crisp image on a piece of white paper. Lay the paper in the 9 ½” by 9 ½” hoop on a flat surface. Open the IQ Positioning app and select IQ Designer “Photo Frame for Positioning Design”. Hold the camera of the mobile device over the hoop and look for the hoop to fill the screen. Make sure the black and white marks on the outside of the hoop are not covered and can be easily seen by the app. The image in the hoop will be captured when the app shows HOLD 3, 2, 1. Select the icon “Send to the Machine”. The mobile device and the sewing machine must be on the same Wi-Fi Network for the image to transfer. The image file is now in IQ Designer and is available to create a linear design for the Outer Pocket of the project.

Using an Image File

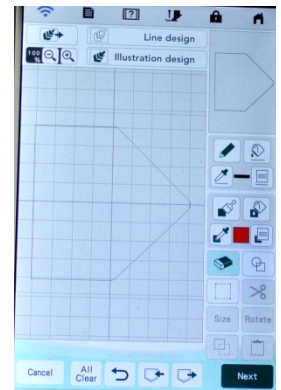
An image stored in the mobile device can also be used to create a design. Locate an image and copy it or take a picture of the image and save it to the device. The image will be located in the Photos files on the device. Open the IQ Positioning app and select IQ Designer “Select Image for Creating Design”. Locate the image from the available images and select it. Select the icon “Send to the Machine”. The image file is now in IQ Designer and is available to create a linear design for the Outer Pocket of the project.

Create the Outer Pocket Design

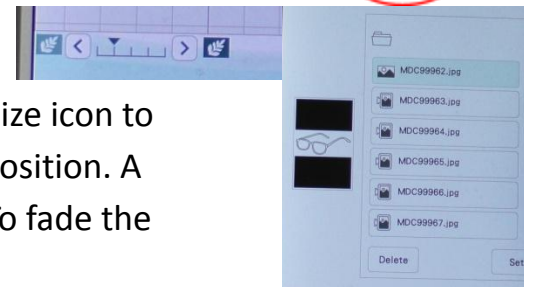
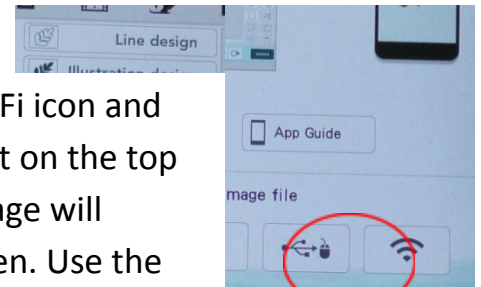
Open IQ Designer on the machine. To create the shape of the outer pocket, select the Shapes icon and select the square. Touch “OK” to put the square on the workspace. Select the “Size” icon and increase the size to 8” square. Put the artwork into the Memory



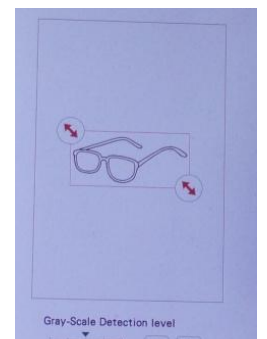
pocket to recall later for the inner pocket of the Eyeglass case. Transform the square into a more complex shape by laying a second shape within the square and erasing the unwanted parts. Select the Shapes icon again and select the second shape on the second row “Diamond”. Touch “OK” to put the Diamond on the workspace in the center of the square. Select the “Size” icon and increase the diamond to 8”. The points of the diamond should touch the sides of the square. Select the “Eraser” icon and the smallest size eraser. Use the eraser to remove parts of the square and parts of the diamond to create a shape as in the image right. Use the Magnification tool to erase the lines without creating a hole in the final shape. If necessary, use the “Undo” arrow icon to repair any accidental erasures. Look around the shape carefully to make sure there are no gaps in the line. Save this modified artwork into the memory.



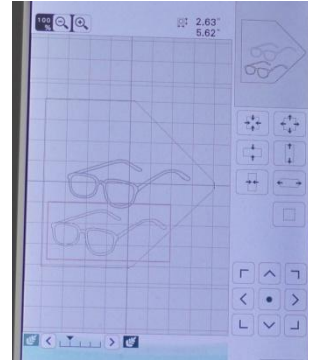
Insert the image into the shape just created. Select the “Line Design” icon to open the Import Image screen. Select the Wi-Fi icon and the image file. The image files are listed with the most current on the top of the list. Select the top-most file and a thumbnail of the image will appear. Touch “Set” to send the image to the Image Edit screen. Use the Crop feature to remove any unwanted parts of the background. Touch “OK” to send the artwork transformed onto the IQ Designer workspace. Select the Size icon to re-size the image if necessary and move the line art into position. A shadow of the image will also appear on the workspace. To fade the shadow out, move the Image icon to the left.



To add a background fill pattern around the Image, select the Region Properties icon and a stipple pattern or a decorative fill pattern. Select the pattern, a color and touch “OK”. Select the “Bucket” icon in the Region Properties menu and touch inside the shape. If the fill pattern escapes into the entire workspace, the shape has an opening. Use the Magnification tool to locate the opening and fill the hole by using the “No Sew” setting with Draw tool to close the gap. Touch “Next” to select the stitch properties.



Modify the outer shape by choosing Outline “On” in the Decorative fill settings. In the Line Properties menu select “No Sew”. Select the “Bucket” in the Line Properties menu and then touch the outside shape. This will prevent a double stitching line on the outside of the design. The outer pocket of the eyeglass case project is stitched on Kraft Tex. Kraft Tex is a paper/fabric product and embroiders beautifully. Stitching on Kraft Tex should not be dense or the product will weaken. Select the Double Run stitch to sew the linear design. In the Line Properties, menu select the Double Run and a color. Select OK. Touch the bucket and then touch all the lines of the image. Using a bright color will help to visualize that all the lines of the image have been assigned the new stitch property. Select “Next” to customize the stitch settings. The outside shape should already be assigned “No Sew”. The background fill style is designer’s choice but should be no less than 100% and the Outside line should be “On”. After modifying the stitch properties select “Set”. Select the image by touching it on the screen. Check that all the parts of the design have been selected by touching the Link icon. Modify the Double Run by increasing the “Run Pitch” to 0.200”. To easily create a new design, save the artwork into the memory. Preview the design and then send to embroidery. Save the completed design into the memory.

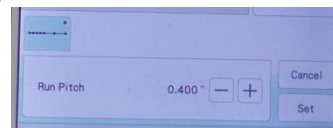


Stitch the Outer Pocket with Kraft Tex

To stitch the outer pocket, hoop the medium tearaway stabilizer into the 9 ½” by 9 ½” hoop and use the spray adhesive to position the Kraft Tex in the center of the hoop. Before inserting the hoop on the machine, use the IQ Positioning Embroidery “Photo frame for Easy Positioning” to send a picture of the hooped Kraft Tex to the machine. Update the image onto the embroidery edit screen and center the design over the hooped Kraft Tex. Baste the Kraft Tex onto the stabilizer, but be aware that stitching into the product leaves permanent holes. Avoid this by basting exactly on the stitching line. In the settings of the machine, change the Embroidery Basting Distance on Settings page 8 to “0” then “OK”. Send the design onto the Embroidery screen and engage the Basting feature. When basting a design, pull up the bobbin thread and hold for the first few stitches. Complete stitching the Outer Pocket, remove the stabilizer from the perimeter of the design and trim ¼” outside the stitching with a rotary cutter, mat and ruler. Set aside.

Create the Inner Pocket Design

Create the inner pocket using two 10" fabric squares and lightweight batting. The first step is to position and baste the batting into place using a smaller square to reduce bulk at the seam line. On the IQ Designer workspace, select the Shapes icon and then the square. Select the Size key and increase the size of the square to 7 ½". In the Line Properties menu select the Double Run and a color. Touch "OK". Touch the Bucket and then the square. Select "Next" and increase the "Run Pitch" (stitch length) to the maximum of .400" to create a basting stitch. Send the design to embroidery. On the Embroidery Edit screen duplicate the design and then center it over the first square. Select "Add" and then IQ Designer to create the second step.

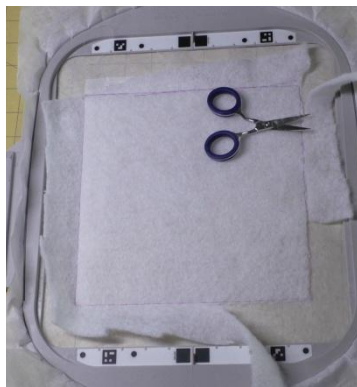


In the IQ Designer workspace, recall the 8" square from memory. Select a decorative fill stitch or stipple and a color from the Region Properties menu. Touch "OK". Touch the "Bucket" and then touch inside the square. Modify the outside line by selecting the "Double Run" and a color from the Line Properties menu, touch the "Bucket" and then the outside line of the square. This will be the final seam line. Select "Next" and on the Stitch Properties screen and change the fill density to less than 100%. By stitching this area more densely, the eyeglass case will hold its shape better.

Stitch the Inner Pocket

Hoop the Medium Tearaway stabilizer and stitch the first color directly on the stabilizer.

Because this is a basting stitch, pull the bobbin thread up and hold for the first few stitches. Place the batting fusible side up over the placement square and stitch the second "color" to secure in place. Remember that this is also a Basting stitch so hold the bobbin thread at the beginning again. Remove

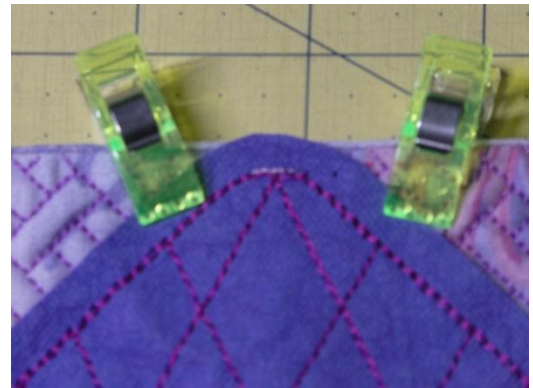


the hoop from the machine and lay on a flat surface. Do not remove the embroidery from the hoop. Trim the batting close to the stitching and use a small iron to fuse into position. Return the hoop to the machine, lay a 10" fabric square right side up and centered onto the batting. Stitch the fill design through all layers. The final "color" is the seam line. Change to

All Purpose thread in the needle and the bobbin. Lay a 10" fabric square right side down and centered over the embroidered square. After stitching, remove the stabilizer from the edge and trim around the seam line $\frac{1}{4}$ " using a rotary cutter, mat and ruler. Trim the corners. Using sharp scissors cut a slit in the **non-quilted** fabric only centered and about 1" up from the bottom edge. Turn the square to the right side through this opening. Push the corners out and press the edges even. If desired, stitch the opening closed by hand sewing.

Putting it All Together

Change the machine to sewing with a 2.5 mm straight stitch. Lay the Outer Pocket on top the Inner Pocket with right sides facing up and the point at the top edge. The slit in the non-quilted fabric should be on the underside and opposite the point. Stitch the point down along the embroidered line through all layers. Fold pieces like a hot dog bun with the Inner Pocket in the middle. Align the edges and use Wonder Clips to secure. Stitch the long side and bottom through all layers about $\frac{1}{4}$ " in. Use the stitching line on the Outer Pocket as a guide.



Design Notes:

Remember that Kraft Tex should not be densely embroidered when choosing your design.

Use any design for the Outer Pocket or add personalization with a name or saying. Before stitching the Outer Pocket, select Add and lettering. Use a Layered Fill on the Outer Pocket.

The Outer Pocket could be a quilted fabric just like the Inner Pocket. Follow the same procedure as the Inner Pocket, but use the special shape created for the Outer Pocket.

Substitute Vinyl or Cork for the Kraft Tex. To add a liner to the Outer Pocket, slip a piece of felt underneath the hoop before basting and embroider through all layers.

Make the finished project larger or smaller by changing the size of the square. Remember that the batting square is $\frac{1}{2}$ " smaller than the finished square to reduce the density along the edge.

