

---

A serger has a place in your quilting bag of tricks. The serger has multiple advantages for assembling and finishing simple quilts. It sews a ¼" seam; it is fast and accurate; it never runs out of bobbin; the seam edges are finished and will not ravel; and it controls bias edges masterfully. And it prepares a quilt for binding better than a sewing machine! The Twister quilt in the video is an ideal serger pieced quilt.

### Supplies

- o Baby Lock Celebrate Serger or any Baby Lock self-threading serger
- o Serger Threads – three cones or spools in a neutral color to coordinate with fabrics
- o Serger needle ELx705CF
- o Wonder Clips
- o Lace Foot for either Baby Lock 4 thread or 8 thread sergers (Optional, but helpful.)
- o Fabric Guide for either Baby Lock 4 thread or 8 thread sergers (Optional, but helpful.)
- o Twister Ruler by Twister Sisters
- o Rotary Cutter, Mat and 6 ½" by 24" ruler
- o Quilting Fabric for the 64" by 64" Twisting Pinwheels Quilt shown in the video:
  - (36) 10" squares
  - (1 ¼ yard) cut into 6 ¼" strips inner border around square grid
  - (1 ¼ yard) cut into 6" strips for final border
  - (5/8 yard) for binding
  - (70" by 70") batting
  - (4 yards) for backing
  - Instructions for the quilt are included with the Twister Ruler

# Instructions

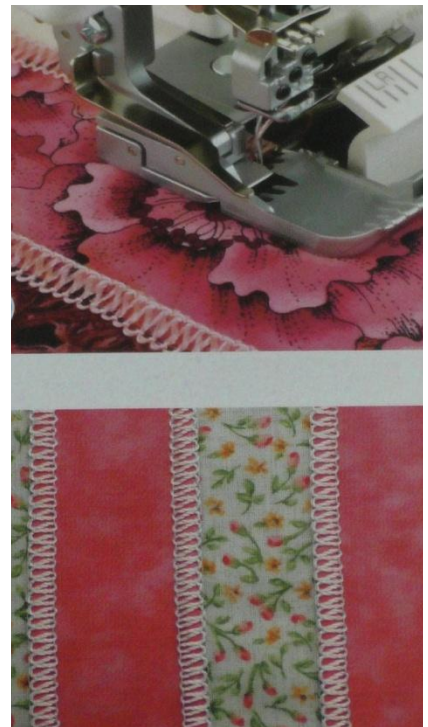
## *Quilt Patterns Suitable for Serger Piecing*

Many quilts are easily pieced with a serger. Look for a quilt with simple lines. Serger seams are bulkier than traditional seams. Quilts with many small pieces are not a good choice. Quilts without multiple shapes intersecting on a single point also will not work well. Matching pieces with right angles is simple. Press seams in opposite directions when matching seams for the best fit.

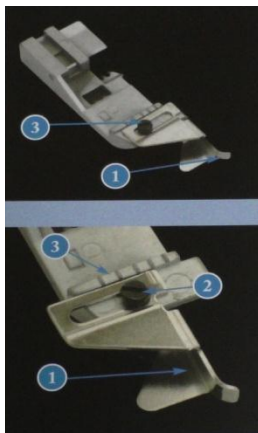
## *Set Up for Serger Piecing*

The ¼" seam on a serger is the three-thread narrow overlock stitch. A four-thread wide overlock seam is slightly wider than the typical ¼" seam. The following settings are for the Baby Lock Celebrate serger. Thread for the three-thread overlock stitch with thread in the upper looper, lower looper and right needle. Set the tensions at "4" for all three threads. (For Baby Lock sergers without tension dials, place the stitch selector to B.) The stitch length should be 2 and the cutting width 6.0. The small numbers on the cutting width dial are the distance to the right needle. Six millimeters is roughly ¼". Use the differential feed to gently keep the layers together if you are concerned with the fabrics creeping and adjust the foot pressure if seams resist passing under the foot.

A flat-lock stitch is another option for decorative piecing on your quilt top. Use a fancy thread in the upper looper to accentuate seams and add some thread art to a simple quilt design as pictured in the photo right.

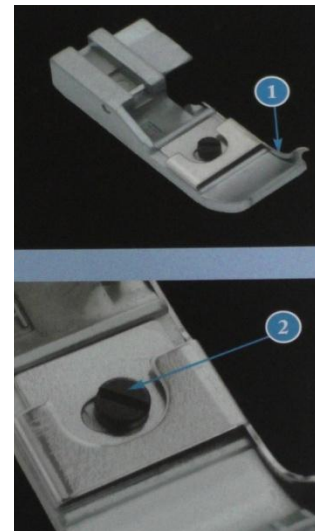


Quilts are typically pieced with a ¼" seam and the shapes will not match if the seam width varies. Because a serger can trim a seam, it is easy to remove too much fabric when joining pieces. Avoid cutting any more than just a sliver of fabric along the seam or do not trim fabric by turning the blade into the locked position. The standard foot will work for quilt piecing on the serger, but optional specialty feet such as the Lace Applicator foot or the Blindhem foot will help guide the edge of the fabric for an accurate seam.



The Lace Applicator foot has a moveable slotted guide on the front or toe of the foot. Adjust the guide (1) to keep the raw edge of the fabric right along the blade. Snap the foot on the machine and place the raw edge of the fabric against the metal guide and under the foot. Loosen the screw (2) and position the guide in alignment for the 1/4" seam. The marks on the toe of the foot (3) indicate the needle positions. The foot for Baby Lock 8 thread sergers is shown in the photo right.

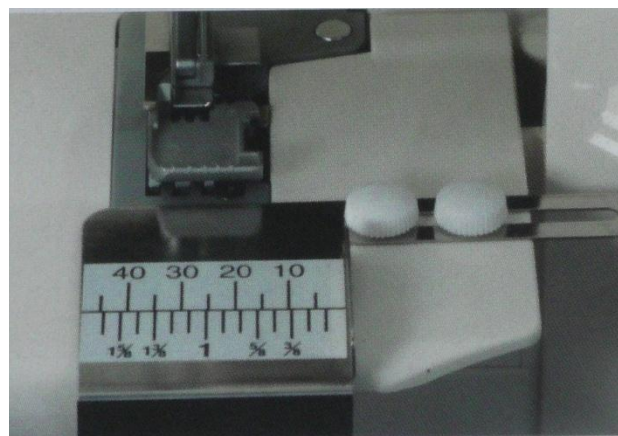
The Blind Hem foot also has an adjustable fabric guide (1) on the side of the foot. Use the screw (2) at the top of the foot to adjust the guide for the 1/4" seam. The foot for Baby Lock 8 thread sergers is shown in the photo left.



When purchasing feet for your Baby Lock serger, be aware that feet between 4 thread and 8 thread Baby Lock Sergers machines are not interchangeable.

### *More Options with a Chain Stitch on 8 Thread or Cover Stitch Sergers*

The chain stitch available on Baby Lock 8 thread or Cover Stitch sergers works well for quilt piecing. Choose this option for intricate quilts with matching seams. Use serger thread in a shade that coordinates with the fabric. Choose from two options for set up. Use the Standard foot with the needle in the center C2 position. The distance from the center needle to the second mark on the right on the toe of the standard presser foot is 1/4". The optional cover stitch foot is ideal for serger piecing using the chain stitch. Set up the machine for a chain stitch and thread the machine with the needle in the C1 or leftmost position. Use the right most notch on the front of the foot to guide the raw edge of the fabric for an easy 1/4" seam. Use the Fabric Guide along with the standard presser foot and the chain stitch accurate piecing. The fabric guide screws to the sewing table with the white thumb screws that came with the machine.



## *Ready to Bind a Quilt; Use a Serger to Prepare the Edge*

Set the serger up for a four-thread wide stitch. The overlock stitch will compress and trim the edge of the quilt at the same time. Press the edge of the quilt to flatten the raw edge of the quilt top. If the edge of the quilt is stretched or rippled, use the differential feed to help flatten the edge. Square the quilt if necessary. Stitch with the needle  $1/8$ " in from the raw edge and the blade trimming the batting and the quilt back. Sew the binding on simultaneously using the lace joining foot to guide the raw edge of the folded binding.

## *Serger Tips for The Twisting Pinwheels Quilt as Shown in the Video*

The Twister quilt shown in the video is made with the Twister ruler by Twister Sisters. Different size rulers are available and all are suitable for piecing with the serger. The instructions for the quilt in the video are included with the ruler and there are no differences between the use of a serger to assemble the quilt using the instructions. Wiggle match the seams in opposite directions and secure with Wonder clips. When stitching matching seams, use a stylus or wooden cocktail stick to hold the seam direction in place until just before it passes under the foot.

The serger is very useful when sewing the bias edges of trimmed blocks together. To keep the bias edges from stretching, try to handle the cut blocks as little as possible and take the differential feed lever of the serger up to "gather" by just one click.

Complete instructions are included with the ruler. Use the diagram below as a reference when watching the video.

