

Refrigerator art is standard décor for families with growing children, but let's take it up a notch. Combine an embroidered child's drawing with a built in picture cutout and make room for the emotional overload. What a great gift for Mother's Day, Father's Day, Grandparent's Day or any day! These instructions and images are from the Baby Lock Altair, but will work in any version of IQ Designer or My Design Center.

Supplies

- o Child's Drawing on paper and IQ Positioning app installed on mobile device
- Or*
- o Child's Drawing as a .jpg image on USB media
- o Photograph to frame
- o Frame with or without glass or mat (11" by 17" frame used in video)
- o Background fabric to fit in hoop and the frame
- o Background fabric 3-4" larger all around than the photograph
- o Floriani Cutaway stabilizer
- o Embroidery Threads
- o Embroidery Machine with IQ Designer or My Design Center

Instructions

Create an Opening for the Picture Using the Built In Shapes

Create a shape that will provide a frame around the picture. Many shapes are available to use, but a simple shape will be the easiest to create the photo opening. Touch the Shape icon and then select a shape. Touch OK. The shape is now on the IQ Designer workspace. The shape will have a red box around it indicating that it is selected. Do not touch the workspace or the shape will be deselected. Touch the Size Icon to change the size of the shape. Measure the picture to



determine the size of the opening and use the arrows to modify the shape to the correct size. Once the shape is the perfect size, touch the Line properties menu and select the double run stitch. Select a unique color that will not be in the final embroidery. By selecting a unique color, the shape will stitch separately from the stitching used in the image. Touch OK and then touch the Paint bucket in the Line section. Touch the shape outline to apply those stitch properties to the shape. Put this shape into the memory of the machine. Recall and position the shape after tracing the drawing.

Decide on the Art Work

The artwork can be virtually any child's drawing regardless of media (crayon, tempera paint or whatever) and on any surface (paper, walls, sidewalk or whatever). Look for artwork with a place to insert a photograph somewhere in the drawing. There are two ways to import the artwork into the machine for use in IQ Designer.

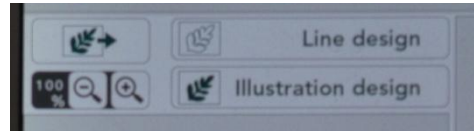
A drawing can be imported into the machine by simply opening a photo (.jpg) stored on USB media such as a jump or thumb drive. Transfer the photo to the USB drive by inserting the media into the computer and moving the photo file onto the drive. The photo need not be in a special folder, but if the USB media has multiple files a separate file folder will be helpful. If possible, give the photo a descriptive name to make it easy to find. The photo can be from a direct source such as a phone or digital camera and can be transferred onto USB media to bring into the machine or sent through the IQ Positioning app. On the app select "IQ Designer/Select Image for creating design". Indirect sources of a photo can be one sent via email or text and saved onto the mobile device with the app. If using a jump or thumb drive, insert the USB into the USB port on the machine.



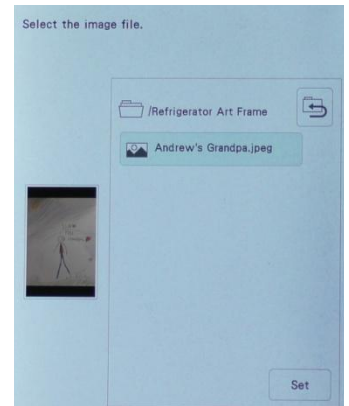
For machines that use the IQ Positioning application such as the Altair, place the artwork on a flat surface and lay the hoop so that it frames the artwork. Use the app to capture the image within the frame and send wirelessly to the machine. Yes, you can hold the frame over any artwork that is not on paper like a wall or floor. Only the artwork that is showing within the frame will be transferred to the machine. On the app select "IQ Designer/ Photo frame for creating design". Some machines with IQ Designer use a scanning frame to capture the image. Lay the artwork on the scanning frame and secure with magnets around the edge and scan the image into IQ Designer.

Import the Image into IQ Designer

Open IQ Designer on the machine. Images can be automatically transformed into embroidery through IQ Designer by selecting either Line Design or Illustration Design. By selecting either Line Design or Illustration Design and going through two to three steps, the image becomes artwork with stitch properties assigned to it by the machine. Automatic transformation in the machine gives good results with clean artwork with sharp contrast and lines. Refrigerator art generally does not meet the criteria for sharp contrast and precise lines. The best process for transforming this type of artwork is by using the drawing tools in IQ Designer to trace over a background image of the artwork. The artwork, therefore will be brought in as a background image only. To import the artwork, select the Image icon (a leaf with an arrow) and a new screen will appear.



- o If the drawing is on a USB, select the icon on the bottom of the screen that corresponds to the location of the USB. Find the image among those listed on the menu. If the image is in a file, locate that file and then the image. Touch the file name and then set to send the image onto the IQ Designer workspace.
- o If the drawing was sent via the IQ Positioning app, touch the wireless icon on the bottom of the screen and then select the number for the image. If multiple files are available, touch each in turn to see the image in the small window to the left of the file tree. After locating the image, touch Set to send the image onto the IQ Designer workspace.

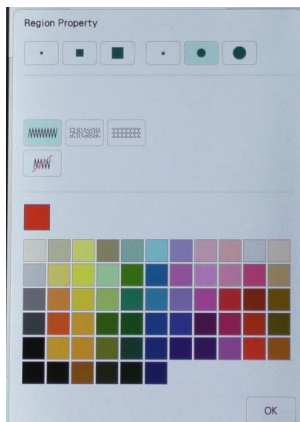


Once the image is on the workspace, use it to recreate the artwork by tracing the image. Draw large areas using a Region fill or draw lines using the various types of line stitching. The machine will create embroidery only from the lines or regions that you trace using the image as a guide. The background image can be magnified, intensified or softened for ease in tracing.

Drawing Tools in IQ Designer

In tracing the image, use both the Region and Line drawing tools. Select the type of region or line desired in the menu for each type of embroidery needed to reproduce the image. Select

the color of the stitches and the type of line or region stitching to be applied in either the Region Property menu or the Line Property menu. (Any style line or region can be modified later before the embroidery is finalized, but a line can not be changed to a region and a region can not be changed to a line.)



o In the Region Property menu, the size and shape of the “paintbrush” is a choice at the top of the menu. Select from a solid fill, a stipple or a decorative fill. Be aware that both a stipple fill or a decorative fill will not work well in very small or narrow regions. When choosing a color, remember that every new color is a color change on the machine. IQ Designer will group all the Region objects of the same color together automatically. When creating a design, the machine will **generally** stitch the regions first and **generally** stitch from top to bottom.



o In the Line Property menu, the choices for the “pencil” are closed shape, open shape, straight line and angled line. After selecting a drawing style, choose from a zigzag stitch, double run stitch, triple run stitch, candle wicking stitch or chain stitch. (Some machines offer additional variety of decorative stitches.) When choosing a color, remember that every new color is a color change on the machine. IQ Designer will group all the Line objects of the same color together automatically. When creating a design, the machine will **generally** stitch the lines after all the regions have stitched and **generally** will stitch from top to bottom.

Trace the artwork to recreate the “essence” of the drawing. It isn’t necessary to recreate every line to achieve great results. Keep the following suggestions and warnings in mind.

- o Remember to keep the drawing within the size of the frame or the mat.
- o Do not place any stitching where the photo frame will be. (Don’t worry, any accidental drawing in that area can be erased.)
- o To check your drawing without the background artwork, fade the image. To create detail in an area, magnify the image to help visualize the details. (Don’t get too detailed because anything very small will not reproduce well in embroidery.)
- o If you make a mistake, use the undo icon. If you want to start over from the beginning, touch the all Clear icon. (Seriously, don’t over think this. You are recreating a child’s drawing, not the Mona Lisa or whatever.)

- o To check out what you have done, touch Next to apply stitch properties and then Preview to see how the design will look in embroidery. As long as you don't send your creation all the way to the land of embroidery you can play all the live long day by toggling back and forth through all the screens.
- o Save your finished artwork in case you want to modify the final result just a bit and do not want to start from the beginning.

Add the Photo Opening and Stitch Your Masterpiece

When you have created your rendition over the child's masterpiece add the photo opening by recalling it from the memory. Touch memory recall and the saved shape. Do not touch the workspace or you will deselect the shape. Touch the size key and use the arrows to move the shape into position. If a lot of your artwork is within the shape use the eraser to remove it, but do not erase any of the shape. Any lines inside the photo opening will not be seen, but there is no need to add unnecessary stitches. The shape should have retained the stitch properties assigned to it when it was placed in memory. If the color of the shape is not different than all the other colors, change it now so it will stitch separately.

Hoop the fabric with a stabilizer appropriate to the density of the design. A Medium Cutaway or Tearaway is generally a good choice. Stitch the design, including the frame opening. Use a thread that matches the background fabric when stitching the photo opening. When the embroidery has finished stitching, use the +/- icon to go back to the photo opening color. Using the previous stitching as a guide, place a piece of fabric larger than the opening right side down and completely covering the opening. (Ideally this piece should be at least 1-2" larger all around than the opening.) Using matching thread to the background fabric, stitch this color of the design and only this color of the design again. Remove the hoop from the machine and the embroidery from the hoop.

Using sharp scissors cut away the inside of the photo opening about ¼" from the stitching. Trim the stabilizer very close to the stitching. On the curves, make small clips in the seam up to but not through the stitching. The more clips the smoother the curve will be. Turn the fabric to the back of the embroidery and work to create a sharp edge. Press well.

Frame your masterpiece in the frame of your choice. Place the photo behind the photo opening. If the frame doesn't have glass, you can place a piece of plastic behind the opening

and over the photo to protect it. If the photo is a one of a kind keepsake, be cautious how it is secured behind the embroidery or make a copy to go in the frame.

