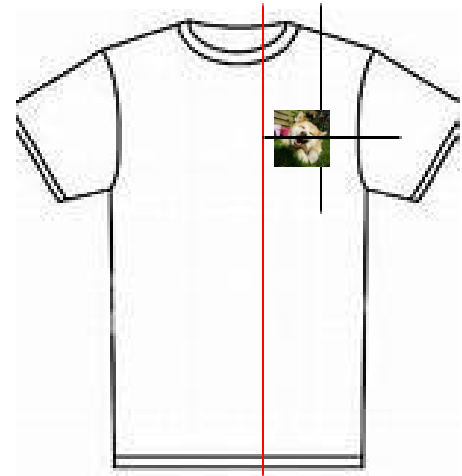


---

### Supplies

- o T-shirt pre-washed to shrink if necessary
- o Embroidery Thread and Embroidery Bobbin Thread
- o Floriani Power Mesh Stabilizer
- o Ruler and Removable Marker such as Wash Away Marker or Frixion Pen

### Instructions



#### *Left Chest Embroidery*

Select a t-shirt and pre-wash to shrink. Dry shirt and press if necessary to remove any wrinkles. Select or create embroidery in the recommended size. For adult “left chest” embroideries the standard design area is approximately 2 ½” – 4” wide and 2” tall. Larger embroideries are better placed on the back or on the sleeve. Larger size shirts can accommodate an embroidery up to 5” wide and 3” tall on a sleeve. Use a smaller size embroidery on smaller shirts. Cut a piece of paper the size of the embroidery and place it on the shirt for a visual check if the size looks in scale to the garment.

Placement of the design on the left chest of the shirt depends on the size of the shirt. Fold the shirt in half right side out along the center front and aligning the shoulder seams. For a left chest embroidery, the center fold of the shirt will be on your left and the shoulder seam away from you. To locate the embroidery, measure down from where the collar meets the shoulder seam and across from the center. (See illustration above.) Use the following measurements as general guidelines for the **center of the embroidery** as shirt sizes vary depending on the brand. Place a mark for the center of the embroidery and draw crosshairs with a removable marker.

T-Shirt Size	Measure down from the top edge of shoulder	Measure across from the centerline of the shirt
Men's 4X	7 $\frac{3}{4}$ "	6 $\frac{1}{4}$ "
Men's 3X	7 $\frac{1}{2}$ "	6"
Men's 2X	7 $\frac{1}{4}$ "	5 $\frac{3}{4}$ "
Men's XL	6 $\frac{3}{4}$ "	5 $\frac{1}{4}$ "
Men's L	6 $\frac{1}{2}$ "	5"
Men's M	6 $\frac{1}{4}$ "	4 $\frac{3}{4}$ "
Woman's 2X	6 $\frac{3}{4}$ "	4 $\frac{3}{4}$ "
Woman's XL	6 $\frac{1}{2}$ "	4 $\frac{1}{2}$ "
Woman's L	6 $\frac{1}{4}$ "	4 $\frac{1}{4}$ "
Woman's M	6"	4"
Woman's S	5 $\frac{3}{4}$ "	3 $\frac{3}{4}$ "
Youth XL (20-22)	7"	3 $\frac{3}{4}$ "
Youth L (16-18)	6 $\frac{3}{4}$ "	3 $\frac{1}{2}$ "
Youth M (12-14)	6 $\frac{1}{2}$ "	3 $\frac{1}{2}$ "
Youth S (8-10)	6 $\frac{1}{4}$ "	3 $\frac{1}{4}$ "
Child 6 & 7	5 $\frac{3}{4}$ "	3"
Child 5	5 $\frac{1}{2}$ "	3"
Child 4	5 $\frac{1}{4}$ "	3"
Child 3	5"	2 $\frac{3}{4}$ "
Child 2	4 $\frac{3}{4}$ "	2 $\frac{3}{4}$ "

## *Embroider the Shirt*

After marking the center of the design area, cut a 6" square piece of Fusible Floriani Power Mesh stabilizer to fit into the 4" by 4" hoop. Use a larger hoop for a larger design. Iron stabilizer on the inside of the shirt and centered over the center mark of the design. Hoop the shirt keeping the crosshairs squared to the hoop and the center mark close to the center of the hoop. Using the positioning functions of your machine, place the design on the center mark and carefully align the crosshairs. It is more important to keep the design squared to the center mark by rotating when necessary than the exact position of the center of the design. Even a slight "off rotation" of an embroidery will be noticeable. When using a

multi-needle machine, hoop with the bottom of the shirt to the back of the machine for ease of embroidery. Remember that the design will need to be “upside down” on the screen so it will embroider correctly on the shirt. Check twice, embroider once.

### *Some Shirt Ideas*

T-shirts are easy to find with just about anything printed on them, but isn't your t-shirt recipient special? Make their shirts fit their personality. Do they have a favorite saying or a nick-name they wouldn't mind showing to the world? Do they have a special cause, club or hobby to announce? How about an embroidery of a special car or pet with “Skitzzy's My Grand-dog” proudly embroidered underneath? Is the family going on a special trip and matching shirts with your version of “The Miller Family 25<sup>th</sup> Reunion” be just perfect?

**Note: It is not recommended to embroider young children's names on any items so they cannot be lured with the use of their name by a stranger (sad, but true.)**

New embroidery enthusiasts may want to practice on a t-shirt before committing to an actual (possibly one-of-a-kind or expensive shirt) for the first time. Giveaway shirts from events, second hand stores and tag sales are a good source for practice items. Avoid shirts with thick screen-printing in the area you wish to embroider. If the embroidery doesn't work out, the shirt is ideal for cleaning out the BBQ, polishing the furniture or washing the car.

### *Some Dad Jokes from the Internet*

Scratch here (with numbers on the back).

Try resistance-training, refuse to go to the gym.

Whenever I try to eat healthy, a chocolate bar looks at me and Snickers.

Round is a shape.

Wishing you a happy whatever doesn't offend you.

Our mountains aren't just funny, they are hill areas.

Dogs can't operate MRI scanners, but cats can.

For chemists alcohol isn't a problem, it's a solution.

My mood ring is missing and I don't know how I feel about that.

Electricians have to strip to make ends meet.

He who laughs last didn't get it.

Corn stumbles into a pot field and the stalks have never been higher.

I am friends with 25 letters of the alphabet. I don't know Y.

Don't let anyone call you average. That's just mean.

Bad puns, that's how eye roll.  
Whenever I feel blue, I start breathing again.  
Well, to be frank, I'd have to change my name.  
What I if told you, you read the first part of the sentence wrong.  
Turning vegan would be a big missed steak.  
I scream, you scream, the police come. It's awkward.  
I like cooking my friends and my pets. Use commas, they save lives.  
Life is short. If you can't laugh at yourself, call me and I will.  
Crushing pop cans is soda pressing.  
Some people are wise. Some otherwise.  
Be the "fun" in dysfunctional.  
Decaf coffee is depresso.  
The chains in my mood swing just snapped. Run.  
Where do the bad rainbows go? To prism.