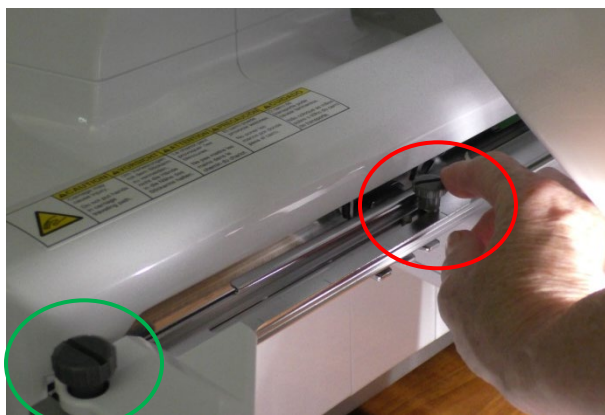


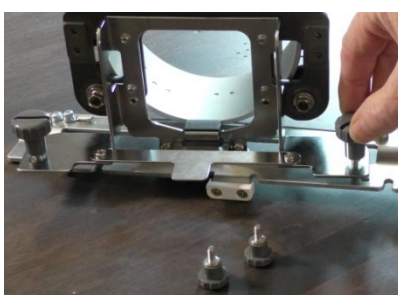
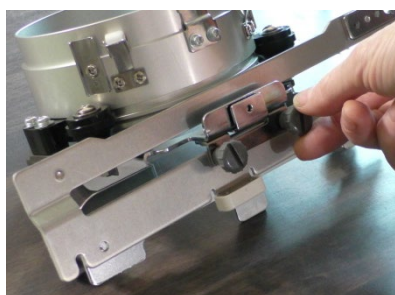
Installing the Cap Frame Driver (The Part Attached to the Machine that the Hoop Clicks Into)



The “Cap Frame Driver” is the part that attaches to the machine. To install the new part, turn off the machine. Seriously, you don’t want to accidentally make the machine move as that would not be good for the machine or for your fingers. Remove whatever frame holder currently attached to the arm of the machine. There are two small-ish thumbscrews on the top of the frame holder (red

circle). Remove them and then re-attach them to the two holes on the right side of the holder for storage. Set the frame holder aside.

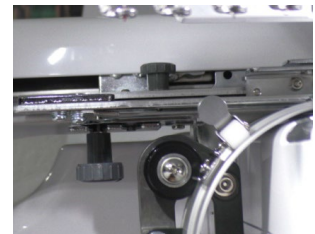
Securely fasten the cap frame driver to the machine with four thumbscrews. There are two small thumbscrews on the top and two larger thumbscrews on the bottom. Remove and **relocate** the two small thumbscrews on the top and just loosen the two larger thumbscrews on the bottom.



Practical Knowledge:

The multi-needle machine reads a sensor on the frame holder to know what type and size of frame is on the machine. Loosen the larger thumbscrew (green circle) on the left side of the frame when adjusting for different widths of frames and re-tighten. There are different frame holders for different kinds of hoops and a letter on the holder identifies the frame holder. The “A” frame holder is for the frames (hoops) that came with the machine. The “B” frame holder is for optional frames that did not come with the machine. The “C” frame holder is for the optional round embroidery frames. Other specialty frames (and there are quite a few available) will come with the frame holder specific for them.

Carefully slide the cap frame driver onto the machine. The square opening fits into the free-arm of the machine. Don’t hit the needles with the top of the cap frame driver. **(Don’t hit the needles with the cap frame driver!)** Align the loosened large thumbscrews on the bottom of the cap frame driver and the top holes onto the pegs. The small thumbscrews will fit into the v-shaped slots to the right of the holes on the top of the cap frame driver.



Finger-tighten the thumbscrews to secure the cap frame driver. The cap frame driver should just clear the free-arm of the machine. To adjust the height of the cap frame driver, follow the explicit instructions in the user manual. (Yes, open the user manual because it also has great drawings.) The final step is to install the little black plastic needle plate spacer that came with the machine to the needle plate. Periodically check that the spacer has not popped off and fallen to the floor to be vacuumed up never to be found again.

Installing the Mounting Jig (The Part Attached to the Table to Help Hoop the Hat)

The mounting jig holds the hoop that holds the hat while putting the hat on the hoop. Basically, it is a second set of steady hands to help control something that doesn’t want to be controlled. The mounting jig attaches to the side of a table with a clamp. An optional machine stand has a specific location for attaching the mounting jig at a good height. Without the machine stand, choose a sturdy table with a solid edge to secure the mounting

jig. The perfect height for the mounting jig is relative to the height of the operator. “Belly Button” height is a good range to aim for. Tighten the clamp to secure the mounting jig.

The mounting jig is adjustable for the type of cap to be hooped. Extend the base of the mounting jig for standard caps by loosening (not removing!) the four screws on the inside bottom of the metal platform.

Hooing the Cap (The Part that Holds the Hat While the Machine is Stitching)

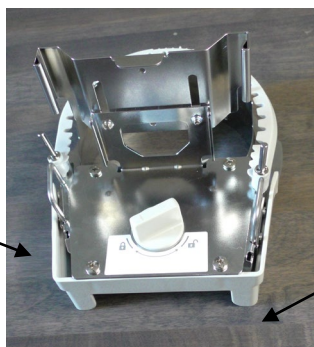
The cap frame has two parts, the frame that attaches to the machine and the upper frame that holds the cap to the frame right at the seam line between the cap and the bill. Remove

the upper frame by turning the lock knob to the unlocked position. Pull the upper u-shaped part up and off of the hoop. Using the metal extensions on either side of the hoop (they look like ears) push the hoop onto the mounting jig. Look on the top of the mounting jig to see that the center notch fits onto the center mark on the mounting jig. The frame will click into place with minimum pressure.

Practical Knowledge:

Notice how the hoop clicks onto the mounting jig and look at where the parts align. This is identical to how the hoop fits onto the machine and is much easier to see than in the back of the needle bar on the machine. It is easier to know where to go and not just “fumble in the dark” when trying to find the happy place where the hoop attaches.

The upper hoop slides into the hoop when the dial is in the locked position. Use even pressure when pressing down to avoid locking in uneven. Check that the center is still in the center position.



The mounting jig holds the stabilizer in place when trying to position the cap on the hoop. (Thank you mounting jig!) The stabilizer

piece depends on the cap, but is generally about 6” to 7” by 3”. Slide a piece of stabilizer under the metal band with three tabs and catch it on the pins sticking up from the base of the mounting jig. The stabilizer will be pierced by the pins, but if it isn’t it should still work. The stabilizer depends on the hat, but usually a

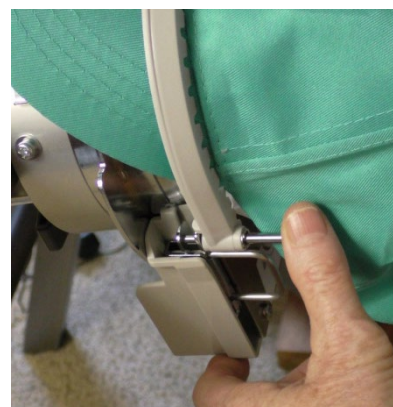
medium weight non-fusible tearaway will work. If the cap is new, it may have a cardboard piece in the brim for display. Make sure to remove the cardboard. (Just sayin'.) Turn the dial on the bottom of the cap frame to the unlocked position.

Insert the cap into the u-shaped upper frame. Squeeze the cap from either side of the brim where the bill attaches and at the seam line. Insert the cap into the u-shaped upper frame. Align the center of the cap with the center mark. Bend the cap and not the upper frame. The “teeth” of the upper frame should settle in the seam between the bill and the brim.



Sometimes the seam will not completely fit into the little teeth, so fit the center area as best as you can. Pull the sweat guard (the little flap of fabric in the inside of the cap) away from the cap and underneath the pins on either side of the upper frame. Drop the upper hoop fitted with the cap straight down onto the mounting jig and insert the bottom of the u-shaped piece into the openings on the frame. With your thumb on the pin on the upper frame and your fingers on the bottom of the hoop push down to settle the upper frame into

position. Turn the dial to the locked position. Use the angled clips to secure the fabric after laying the fabric of the brim of the cap towards the sides. Use the metal handles to pull the frame straight out and off of the mounting jig.



Place the cap on the machine by turning the top with the brim to the side and sliding it under the needles. Don't hit the needles with the frame! **(Don't hit the needles with the frame!)** After the brim has cleared the needles, turn the brim back up to the top and click the frame into position. Now you are ready to embroider. Don't worry, the machine knows you have the cap frame on and will not only automatically orientate the embroidery design upside down, but it will not let you choose a design that is too big. (Thank you, machine!) If you do a lot of caps you can purchase a separate cap frame alone to be hooping the next cap while one is on the machine embroidering.