



Class Supply List

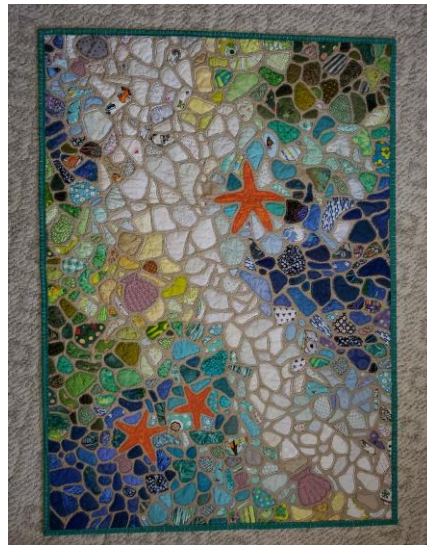
Sea Glass Quilt

Michele Rank

Moore's of Brea

Wednesday, February 8th, 3:30 p.m. – 4:30 p.m. (Prep)

Saturday, March 11th 10 a.m. – 3 p.m.



Supply List:

- *Your own sewing machine
- *Quilting threads for stitching down glass.
- *Serrated sewing scissors for cutting out shapes
- *Rotary cutter and a travel cutting mat
- *Basic quilting rulers- 12x12
- *Travel iron and a travel iron mat
- *#2 pencil and a white chalk marking tool
- * Your basic quilting tool kit
- *505 Spray or Free Fuse
- * Fabrics listed below
- * Steam-A-Seam Light or double sided adhesive of your choice, between 4&6 yds.

Supply List + Fabrics:

- Sewing machine with all components
- Feet for machine & walking foot

- Travel Iron and Iron Mat
- Comfortable Cutting Scissors - serrated edges are best
- Travel Rotary Cutter and Mat
- White Chalk Marker and #2 pencil
- Basic Sewing Notions- scissors, pins, ect.
- Batting 42x32
- Backing 42x32
- Binding ½ Yard to match your quilt.
- Quilting Threads for stitching down fabrics
- Base Fabric 42x32- I used a sand color that was neutral.
- Various Fabrics for glass pieces - Lots of scraps or planned pieces up to you. Keep in mind you will need a lot of fabrics for this.
- Starfish Orange Fabric - 1 Fat Quarter
- Scallop Sheet Fabric - 1 or 2 Fat Quarters
- Quilting Rulers large square 12x12 or larger & a 6x24
- 505 Spray or Quilting select Free Fuse
- Steam-A-Seam Light, or other double sided Adhesive of your choice. You will be using between 4-6 yds. It all depends on the sizes of your glass and the quantity of cuts you create.

All supplies with an * are available for purchase at Moore's!

www.moores-sew.com