

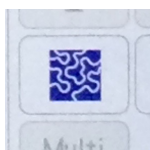
Background Quilting on an Embroidered Quilt Block

Instructions for the BabyLock Altair and Similar Machines with IQ Designer

Built in features on the machine make quilting with embroidery a whole lot of perfect. Adding stippled background quilting to an embroidered block can be as easy as touching a button. Adding a fancy quilt with a patterned fill is almost as simple. IQ Designer will even assist with perfectly squared up blocks.

TO ADD STIPLING WHEN EMBROIDERING A BLOCK

To add stippling to the background of a block during embroidery is automatic with the selection of that feature while editing the design. Select any design built into the machine, from an outside source via USB or wirelessly through Palette 10 software. Set the design onto the edit screen. If combining designs, add all designs and group them with the group function before adding background stippling.



Select the stippling button on the edit screen. A new window appears with options for the desired hoop size, distance from the design and stippling size. Select preferences for your project and touch preview. At the preview screen, you can change the settings before touching OK to send the design to the Edit screen as an embroidery. The machine creates the stippling automatically as an embroidery design and it will be stitched last in the sewing order.

ADD QUILTING TO AN EMBROIDERED BLOCK AFTER PIECING THE QUILT AND RE-HOOPING

Background quilting can be added to a block after it has been stitched and pieced into a project. When combining designs in a single block to be quilted later, put the combined embroidery into the memory of the machine to be recalled later for the precise outline.

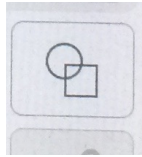
Hoop the block to be quilted centering the design. The edges of the block must be accessible within the hoop so the quilting design will fit in the block. The largest hoop on the Altair is 9 1/2" x 14".



Create an outline for the design. Recall the embroidery and create an outline by selecting the flower key. A screen opens with a representation of the outline and options for the distance from the embroidery edges. Note that the interior areas have not been outlined. We can add the larger areas later with the drawing function in IQ Designer. Select distance you prefer the outline from the embroidery by pressing the plus or minus icons. Select the Memory key in the lower right corner of the screen to send the outline to IQ Designer. Back at the Edit screen, touch the Home icon and then IQ Designer. There is no need to keep the design as it has already been stitched and we are now going to create the background quilting only.



Open IQ Designer and send an image of the hooped block to the machine with the IQ Positioning app. This image is our guide to placing the background



quilting and creating additional areas if desired. Retrieve the outline by selecting the shapes key on the IQ Designer workspace that looks like a circle and a square and then the flower icon in the upper right of the Shapes screen. The outline of the embroidery will be one of the choices. Select it and touch okay. Move the outline over the image by touching it directly on the screen or by using the move keys for



precise positioning. You may need to rotate the outline or magnify the view on the screen for placement.

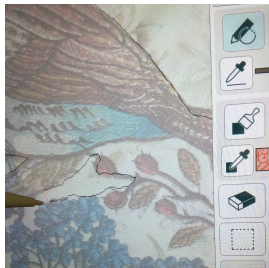
To keep the background quilting within the seams of the block you will need to create an outer boundary for the quilting. Because we have the image of the block the outer boundary can be placed right along the seam line. The easiest way is to simply draw around the block



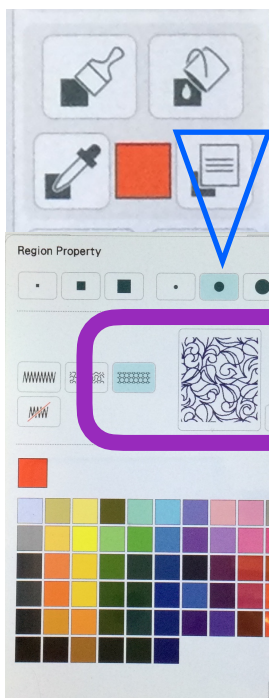
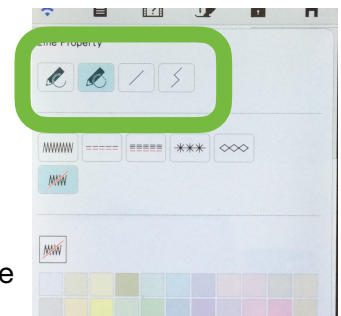
with the drawing tool in the line properties box. Touch the Line Properties box (see image tight, red triangle) and select a drawing tool (green box in the image right). The best choice for drawing this type of outline is the drawing tool that looks like straight angled lines. This tool automatically connects the first and last points. Before leaving the line properties screen, select the “no sew” line type and the color will turn a light grey with dots.



Using the background image as a guide, touch and release in each corner around the edges where you want to contain the quilting. The box will automatically “close up”.



To create an interior area, select the Line Properties box and choose the drawing tool second from left that looks like a pencil with a completed circle. Freehand drawing with this tool will also complete the outline automatically. Select the “no sew” line type and then touch OK. Using a stylus or your finger and with the background image as your guide, draw around the area. You do not have to be precise because this is just a boundary for the background quilting and the line will not be sewn.

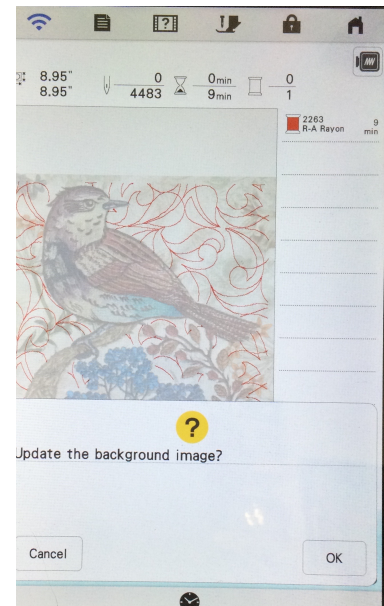
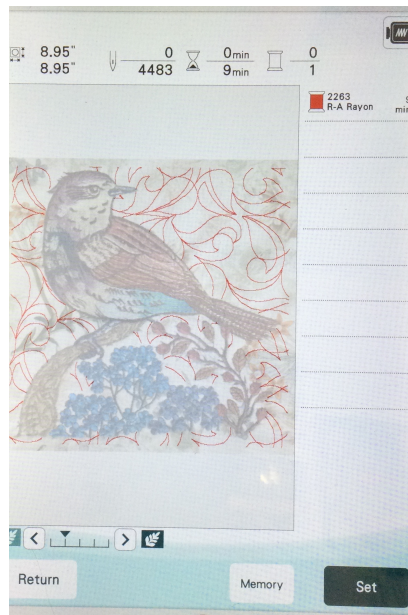
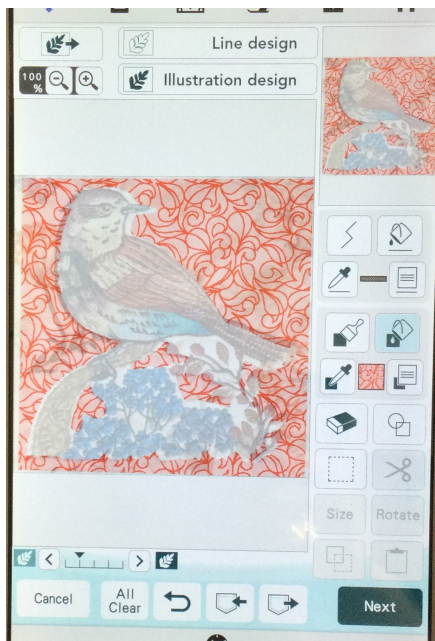


When all the areas have been outlined, select the pattern of stitching for your project in the Region Properties screen (blue triangle image left).

Stippling is a selection and additional types of fill stitching is available by touching the Select key (purple box image left). Choose a pattern that works for your project, touch Okay and then choose a color. I choose a bright color that contrasts with my quilt block. I will not be stitching with that color but it will make it easier to check the placement. Touch Okay. Back on the IQ Designer workspace, select the Paint Bucket icon just above the Region Properties icon you selected earlier and then touch inside all the areas you want the background quilting in. If the fill covers more than just the area and spills out, there is a hole or break in the outline. Touch undo and search for the missing outline. Draw over the outline with the drawing tool by touching the pen in the Line Properties box. Remember you can change the type of drawing tool that best fits your needs and you can magnify an area of the workspace or lighten the background image.

When all the areas have been filled in with the type of stitching you want, touch next and choose the properties of the stitching. If all the areas are not selected, touch the Link icon in the middle right of the screen. Touch the % icon at the bottom of the screen to change the size of the fill design. In the video I increased the size to 180% and I turned Off and outline around the area. After changing the properties, touch the Set icon to confirm the changes. Touch Preview to check your work. Easily go back and forth through the screens to perfect your design. When you are happy, send the design to embroidery by touching Set on the last screen. Select OK when the machine asks to “Update the background Image?” or you send an updated image to the machine with the IQ Positioning app.

In the embroidery edit screen do a final check of the background quilting embroidery with the background image. Aren't you glad you chose a contrasting color? This is now an embroidery design and any placement or modifications that you can do with an embroidery apply to this design also. Make any adjustments or edits and send the design to the embroidery screen. Embroider your quilting!



CREATE A BOX FOR EASILY TRIMMING THE BLOCK

Create a shape that is the final size of your embroidered quilt block by selecting a square under the Shapes key. On the IQ Designer workspace, use the Size key to make the square the correct size. In the Line Properties box, select the double run (two stitching lines) and OK. On the workspace, select the Paint Bucket just above the Line Properties icon and then touch the line. Touch Preview and make the Stitch as long as possible. Touch Set. To keep this design for all the blocks in the quilt, put the square into memory. For best results, stitch the box after stitching as the fabric may have shifted during embroidery. For extra convenience, use wash away thread to stitch the box.

If the size of the complete block is larger than the hoop size, create a shape that fits in the hoop and use that shape as a guide for trimming the block. For example, if the unfinished block size is 12 1/2" square, create a square 6 1/2" and cut 3" out from the stitching on all four sides.