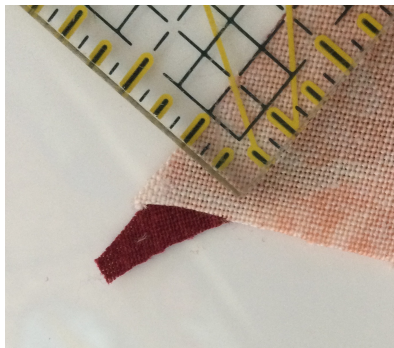


POINTS MATCH WHERE X MARKS THE SPOT



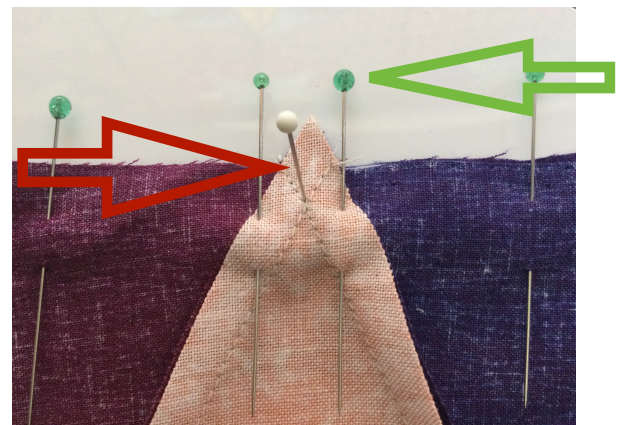
When joining triangles to another piece, the top or the point of the triangle should be 1/4" in from the raw edge of the seam. Align pieces by finding the place where the seams or raw edges cross. Ideally, the seam will pass through the



crossing seams just a bit towards the raw edge of the seam and not "cutting off" the point. Stitching just over the top of the point allows for the turn of the fabric.

PIN MATCHING

Pin matching works great when you need to align any point or perfectly place one point to another such as center points. It can be used when seams are pressed to one side or if seams are pressed open. If points resist matching with thicker fabrics, press the seam open before seaming.



This process uses three pins. To match up any points, place a pin through the wrong side of one piece at the seam line and just at the top of the "point". Pin into the perfect spot on the piece to be matched through the right side and just at the seam. **Hold the pin straight up and pinch both pieces together using the pin to guide the placement. While still pinching together the pieces, pin the pieces together on either side of the guide pin.** I like longer pins for this. Remove the pin used to match the pieces. Pin match all the points that need to align. When sewing, remove the pins just before the seam passes under the feed dogs. A stiletto can be used to hold the match point together with pressure after removing the pin.

WIGGLE MATCHING

When seams cross press seams to opposite sides. The side you press to is sometimes recommended with a pressing plan. Press so that the seams are lying in opposite directions. Seams will snuggle up to each other and any overlap or gap can be felt while pinching with the fingers. When matching is “just right”, place a pin on both sides of the seam before releasing pressure.



SWIRL THE CENTER

When seams meet a very flat center can be achieved by pressing the seams in a clockwise or counterclockwise direction. Remove the stitching in the seam allowance and the center will swirl around the center and press nice and flat.

HERE'S A VERY CHALLENGING BLOCK TO PRACTICE ON!

Print the block pattern on card stock. The outline should measure 8", but if it is another size that is actually okay. (Your complete block will finish to twice the size you print.) Cut apart the individual pieces and use the templates to cut out fabric **adding 1/4" seam allowance to all sides** of each piece. You need four blocks to make the compass. Be sure to label all parts and note that pieces A and B not symmetrical and are mirror images of each other. Piece block by checking orientation and stitching pieces A1 to B1 and A2 to B2. Stitch A/B units to C noting the orientation. Stitch A/B/C unit to D by pin matching the center of the curve to the point of C. Join four blocks with the circle arrow in the center. Press seams in direction of arrows and swirl the seams in the direction of the circle arrow. Unfinished quarter block should measure 8 1/2" and when all four units are joined the completed block should measure 16 1/2".

Compass Point

This is a quarter of the block. When printed the outline of the block should measure 8". Make four and join to make a 16 1/2" block.

