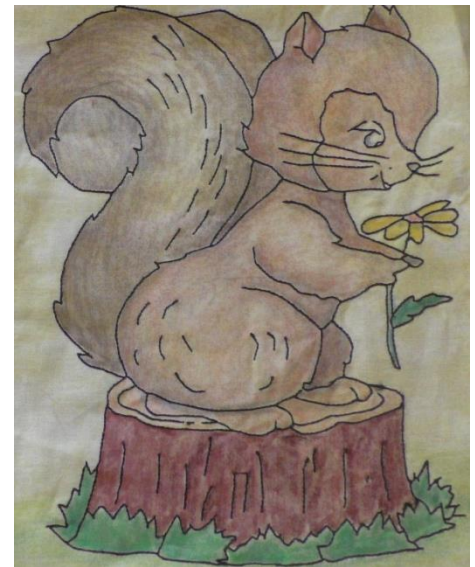


Supplies

- Babylock Altair Embroidery/Sewing machine or any machine with IQ Designer/My Design Center
- Crayons, use a good quality crayon and choose one with a crayon sharpener
- Outline Embroidery on Pre-Washed 100% Cotton Quilting Fabric
 - Good Quality Muslin used in the video (the amount of fabric depends on design)
 - Black Embroidery Thread and Machine Embroidery Needle 75/11
 - Optional: 12 wt. Thread and Machine Embroidery Needle 90/14
- Floriani Medium Weight Tear Away Stabilizer
- Freezer Paper
- Iron
- Wax Paper or Deli Paper
- Image to Create Embroidery
 - Printed Image
 - Trace Image using a #2 Pencil
 - Use a re-trace with a Fine Permanent Marker such as Sharpie Extra Fine Point



Instructions

Find an Outline Embroidery Design

Stitch an embroidery design that contains only the outline. When considering a design, keep in mind that very small areas will be difficult to color without a very sharp point on the crayon. While many outline only designs are available, many embroidery designs will not be only an outline. Look at existing embroidery designs for outlines that can be stitched separately. The classic outline color for Crayon Quilts is black, but multiple colors or just red will also work. A design stitched only in red was also very popular during this era and is called “Redwork”.

Create an Outline Embroidery Design with IQ Designer

Use a printed image or a clean trace of the design. When copying an existing design, trace the design with a #2 pencil. Clean up the image using a fine point marker and re-tracing or re-drawing design and then erasing the pencil lines. Use IQ Positioning app (or scan feature on some machines) to bring design into the machine by placing design page within the hoop. When doing a larger design with multiple parts, do not max out the image within the hoop. By creating a design that does not fill the hoop, it is possible to move and place the design to connect with other parts of the design.



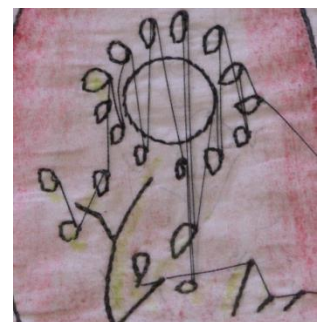


Before selecting the Line Design wizard, open the Region properties menu and select the Triple run. Touch Okay to return to the workspace. Select the “Line Design” icon to open the Import Image screen. Select the Wi-Fi icon and the image file. The image files are listed with the most current on the top of the list. Select the top-most file and a thumbnail of the image will appear. Touch “Set” to send the image to the Image Edit screen.

Use the Crop feature to remove any unwanted parts of the background. Touch “OK” to send the artwork transformed onto the IQ Designer workspace. Select the Size icon to re-size the image if necessary and move the line art into position. A shadow of the image will also appear on the workspace. To fade the shadow out, move the Image icon to the left. Touch “Next” to select the stitch properties. Lots of small lines or dots that are not connected to larger lines in the image (such as in the flowers of the image left) will stitch separately. Erase any very small lines that do not add to the image.

The image should have been created with the Triple Run stitch, but it is a good idea to verify that the design will stitch with this thicker line. To select all the lines in the image, touch the link icon and all the lines will be highlighted. Touch the color chip in the lower right side of the screen to open the Line Properties menu. In the Line Properties, menu select the Triple Run and a color. Select OK. Using a bright color will help to visualize that all the lines of the image have been assigned the new stitch property. Select the Run Pitch to customize the stitch length setting. For standard weight embroidery thread, no adjustments are needed. If using a thicker 12 wt. thread increase the Run Pitch (stitch length) to .96 to accommodate the thicker thread. After modifying the stitch properties select “Set”. Preview the design and then send to embroidery. Save the completed design into the memory.

Small detached lines will stitch separately and each jump will create a trim. To avoid multiple trims, modify the trim feature on the machine to greater than 20mm. When the distance between lines is long, the machine will trim the threads, but any distance shorter than 20mm will not be trimmed. Trim only the top jump stitches by hand after the embroidery is complete. By leaving the bobbin thread



intact, any shorter lines will have greater integrity and the run time of the design will be shorter.

Color In Your Embroidery

The process is simple; stabilize the fabric to make it act like paper, color the fabric with wax crayon and then heat set the crayon with an iron. The color will be set into the fibers and washable. This method of embellishing fabric was very popular starting the 1920s when options for decoration were scarce. When laundering your contemporary project, remember that today's laundry products are more advanced than those a century past. Wash the item separately and use a mild soap that will remove the soil and not the crayon "stain" when cleaning your finished project. If the quilt is a gift, be sure to include laundry instructions to the recipient.

To color on fabric, the fabric needs to be stable so it will not move with the action of the crayon. A stabilizer that is temporarily fused to the back of the fabric is an ideal surface to make the fabric act like paper. Do not remove the stabilizer from the embroidery design until it is colored. If the stabilizer has been removed, iron freezer paper to the back of the embroidery. To iron freezer paper to fabric, place the shiny side of the freezer paper to the wrong side of the fabric and press with an iron. Use a hot iron and no steam on the paper. Make sure that there are no wrinkles on the right side of the fabric. Any raised edge below the fabric will transfer to the coloring as a darker line. Watch for the edge of the stabilizer to avoid unwanted marks. To add texture to the colored area, place an item with raised areas under the fabric while coloring. This can be very effective when coloring any background areas. Yes, you can absolutely color outside the lines.

Color in the design with the crayons. Colors can be blended and shaded. Color can be applied lightly or with a heavy hand. To see how the color will set, try a test sample and then iron it to set it onto the fabric. Place wax or deli paper over the coloring when heat setting to protect the iron. Heat set with a hot iron and no steam. Areas can be reworked after heat setting to add additional color, so start with a light layer and then add additional color if necessary.

