

## Supplies

- Template for Cutting Curved Pieces, Shown in video:
  - Accuquilt dies are available in different sizes
  - Perfect Patchwork Templates: The Drunkard's Path Set by Marti Michell
  - Apple Core template
- 28 mm Rotary Cutter for use with Curved Templates
- Clover Ball Point Stiletto
- Ultra T Foot Set, Quarter-Inch and "J" Foot
- Fine Straight Pins
- Wash Away Stabilizer scraps
- Invisible Thread or Ultra Fine Thread that matches background
- Machine Quilting Needle size 80
- Best Press 2

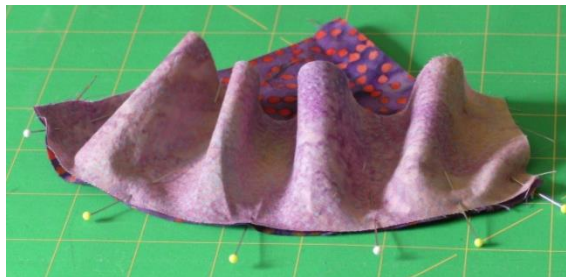
## Instructions

### *Cut Curved Pieces Accurately for Easy Piecing*

Templates for curved pieces (a common pattern is called Drunkard's Path) are easily available. A quick internet search will result in lots of patterns to download, print and use. Templates are an easy way to cut multiple pieces with a rotary cutter. Use a rotary cutter with a smaller 28 mm diameter for cutting along the curve of the template. Die cutters, such as Accuquilt or Sizzix are superior for cutting absolutely precisely cut pieces. Take extra time when cutting pieces for curved piecing. Small variations in the size of the curve will make

fitting the pieces together more challenging. Press the fabric the Best Press 2 to add body and crispness to the pieces.

### *Pin Large Curved Pieces Together for Maximum Accuracy*

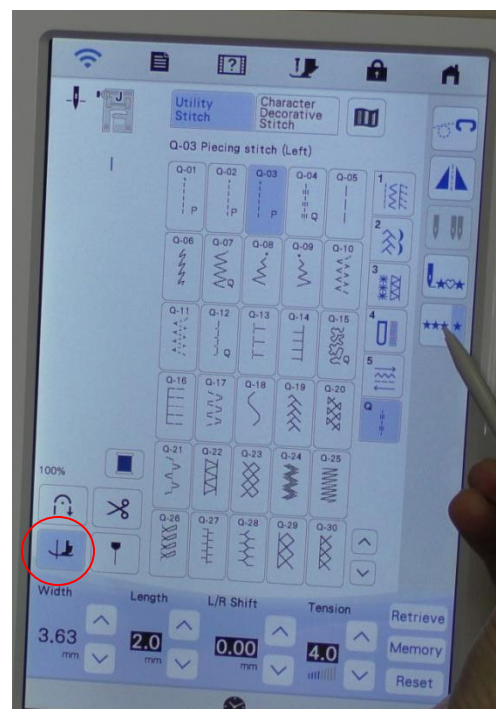


accurate scant quarter inch seam.

Larger curves are easily pieced by matching the raw edges and easing the fullness in. Start by matching the centers and pinning. Find the centers by folding the piece in half and marking or creasing. Pin the two sides by making the side edges even. Finish pinning the ease of the curve. Begin sewing and sew with an

accurate scant quarter inch seam. Check for accuracy in sewing a quarter inch seam by testing the seam with two 2 ½” squares. Sew the squares together and then measure the width when the squares are pressed open. The width should be 4 ½” from raw edge to raw edge. Keep checking the seam after adjusting the machine and sewing a new set of squares. Set up the machine for a perfect scant quarter inch seam by adjusting the position of the needle in relation to the presser foot of your choice. Multiple types of quarter inch feet are available for the machine. The Ultra T quarter inch foot used in the video has a small opening for the needle, but small changes to the needle position are possible. The piecing stitch under the quilting tab offers three different piecing choices.

- Q-01 has a center needle position that cannot be adjusted side to side.
- Q-02 uses the right side of the J foot as a guide for positioning and the needle position can be adjusted.
- Q-03 uses the left side of the J foot as a guide for positioning and the needle position can be adjusted. Since I seldom use this stitch as designed, this is the stitch I modified and saved into the memory of the machine. The setting that works well for me is needle position 3.63. The needle position can also be moved using the L/R Shift key. When changing needle position and using a foot with a narrow opening, check the needle doesn't

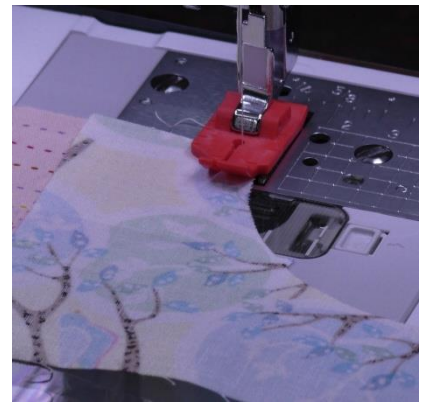


hit the foot by lowering the needle by hand with the flywheel on the side of the machine.

- The pivot feature (red circle photo right) raises the foot and leaves the needle in the down position when sewing is temporarily stopped. This feature is very useful when adjusting the fabric as the curved seam is sewn. Sew with the pie shaped (convex) piece on the bottom and the outside piece (concave) piece on the top.
- A stiletto is helpful to adjust the piecing under the foot while sewing.

### *Ease Together Smaller Curved Pieces for Speed*

Sew smaller pieces without pre-pinning. Position the fabric as shown in the photo. Lift the top piece and sew a short distance along the seam. Stop with the needle down and the presser foot raised. Use the stiletto to position the next part of the curve with the raw edges together. Continue along the curve taking small “bites” of the seam. The machine can be set up to automatically stop after a few inches. Engage the Single Motif



icon to show only one star. The machine will sew a short distance and then stop. Re-engage the foot pedal by lifting your foot and then pressing down again to sew another short distance. Touch the icon again to show three stars to return to continuous sewing.

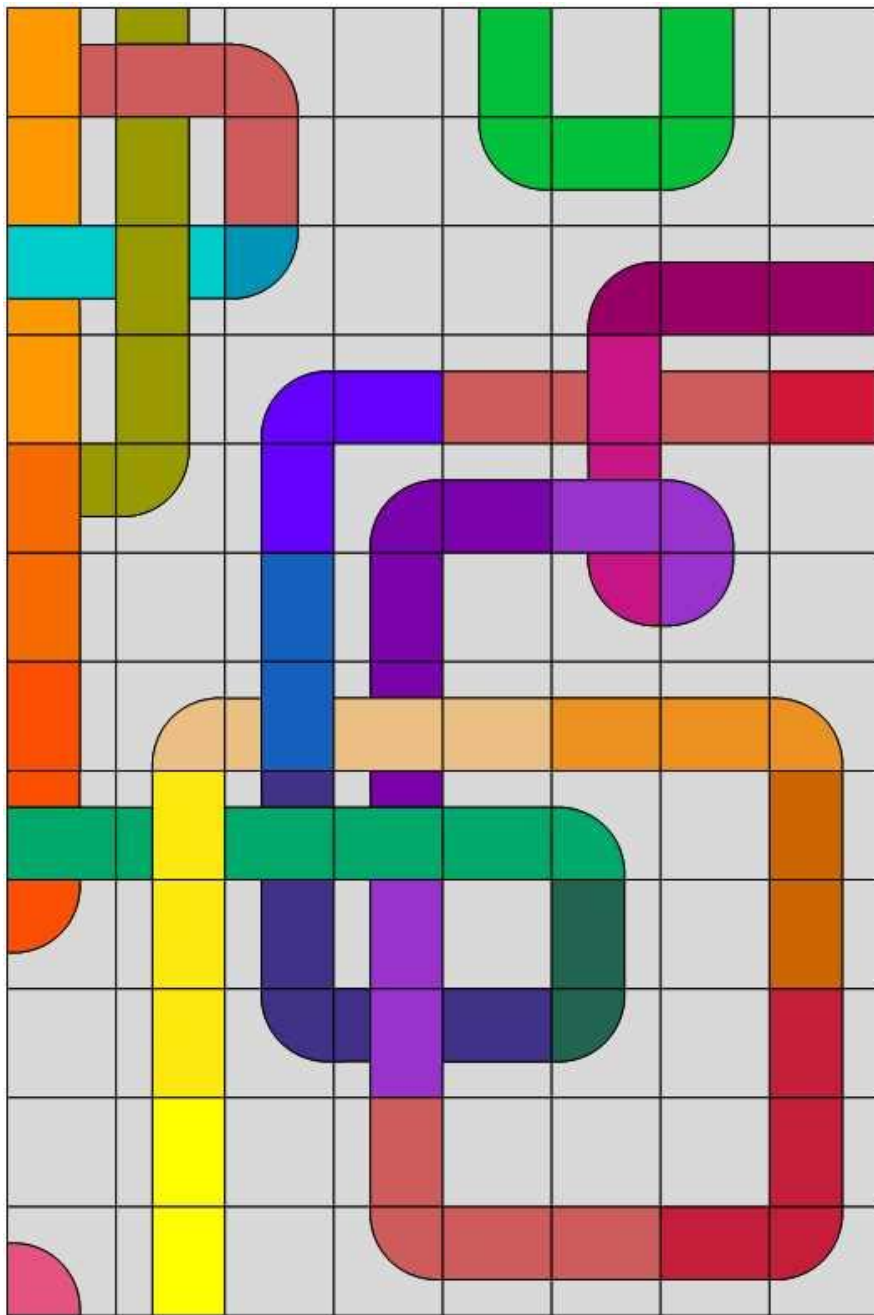
### *Appliqué Pieces for Corners*



Use appliqué for adding a few curved pieces to a project. Cut a curved corner piece and layer a scrap of wash away stabilizer to the right side. Sew an 1/8” seam along the raw edge of the curve. Use the stabilizer to pull the raw edge under. Press the edge without using steam. Sew with a straight stitch just off the appliqué piece and catch the turned under edge with a left swing of the needle. Use invisible thread or a very fine thread that matches the background in



the needle. Stitch Q-12 under the quilting tab is adjustable to take a smaller bite out of the fabric. Adjust it from side to side using the L/R Shift key as shown in the photo.

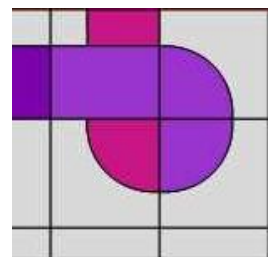


*Here's a Quilt Layout to Play With*

## *"Pipe Dream"*

Create the Drunkard's Path blocks in any size with any template or die cutter.

Measure the finished distance on the side of the block on the pipe elbows (white arrow) and background (black arrow)



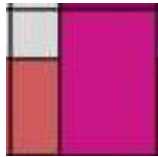
and add 1/2" for seam

allowance to create the straight pipes.





Notice that some pipes cross over and those blocks are created with three pieces.



Get a piece of graph paper and make it as large as you like.

Make a bunch of pipes and elbows to put it together as you go.

This makes a GREAT quilt for a budding hydraulic engineer and would also be a terrific road for toy cars.

Have fun.