
Supplies

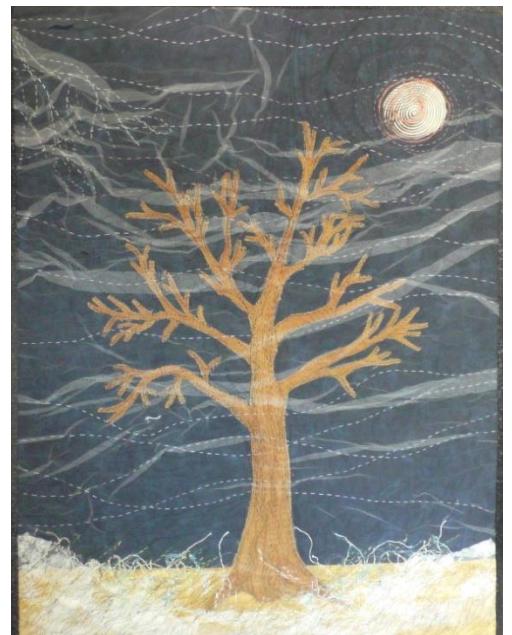
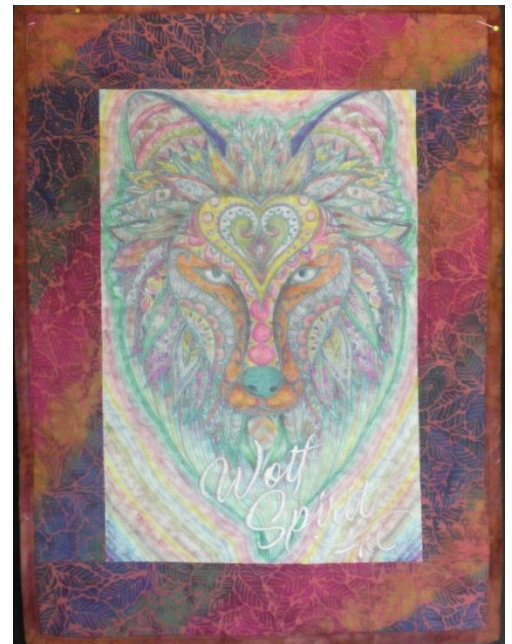
- Overlay Fabric – Sheer Organza or Tulle
- Wash Away Stabilizer or Fusible Wash Away Stabilizer

Instructions

Layering Embroideries

Layering embroidery designs adds extra dimensionality to projects. Additional designs stitched adjacent or on top of previous designs change the original design. Dense designs may be placed over less dense designs or modify the design to reduce bulky, stiff results. Most software will remove overlapping stitches. Removing overlapping stitches is the ideal solution for stitching designs that will lay over the top of the other. Some machines, like the Altair, have the ability to reduce the density of designs.

Designs can also be layered by stitching additional designs on additional fabric layers. Sheer fabrics like netting (tulle) or organza allow the design below to show through. Depending on the transparency of the sheer fabric, the top fabric will soften the colors



of the design or fabric below. Use brighter colors in the bottom layer to counteract the effect. Very transparent fabric or even a clear vinyl will create a fun effect. Use clear vinyl as an appliqué fabric to create a snow globe, flower vase or window in a cottage.

Stitching on Sheer Fabrics

Use a wash away stabilizer when embroidering on sheer fabric. Check manufacturer's instructions for the size of the design. A single layer of wash away will work for many designs, but additional layers are necessary for designs with a large number of stitches. Use a sticky wash away or baste to sheer fabric to the stabilizer. After embroidery, rinse the fabric in warm water to remove the stabilizer. Most embroideries, especially the denser ones, require an overnight soak to remove the stabilizer from under the threads of the design. The fabric will be stiff if all the stabilizer is not removed. The stiffness can be used to advantage in certain fabrics when a three-dimensional effect is desired.

Stitching on Netting

Netting is available in different densities from coarse to fine and soft to rough. Use wash away stabilizer. Very coarse, open netting will not support fine details because of the size of the holes. Finer netting will obscure and soften the design below. Netting is useful for creating three-dimensional effects, especially on landscape projects. Pleat or scrunch the netting to create clouds, hills or water. Layered pieces of thread, fabric, trim or silk flowers under the netting.



Netting is an excellent base fabric to create lace. Choose an open design or use a decorative fill from IQ Designer to stitch a pattern on the netting. Use matching thread in the bobbin to the top thread even if the lace will not be seen from the backside. All-purpose thread works very well to create a matte finish similar to high-end lace. Layer the lace over fabric or alone in garment making.

Layered Stippling or Fills



Shaded effects for backgrounds or foliage are achieved with layers of decorative fills or stippling. At the IQ Designer workspace, select the region properties menu. Select a stipple fill or decorative fill and a color. Before touching OK, select the paintbrush and a paintbrush size. Using your finger or stylus finger paint a shape on the workspace. If the shape will need to be reused, save the drawing into the memory of the machine. Touch next to adjust the stitch properties of the design. When the design is right, send it to embroidery and stitch the design.

To layer the design, modify the design by using the editing functions or creating a new design. By changing the size of the design, slightly moving the design, mirror imaging or rotating the design creates leaves, mountains, waves or shaded objects. Use different colors or variegated thread to create extra dimension.

Use the stipple technique on sheer fabrics or netting. Stitch the overlay design on fabric and then remove the water-soluble stabilizer. Position the overlay and secure the edges with tape. Stitch the overlay down with the same or a new stipple design. This technique is outstanding for trees and clouds in landscape quilts.



Floating Text



Most text will stitch well on sheer or netting fabrics. Choose a font that is not too dense or with too many small details. Use the overlay to cover the entire design area or create an appliqué fabric.