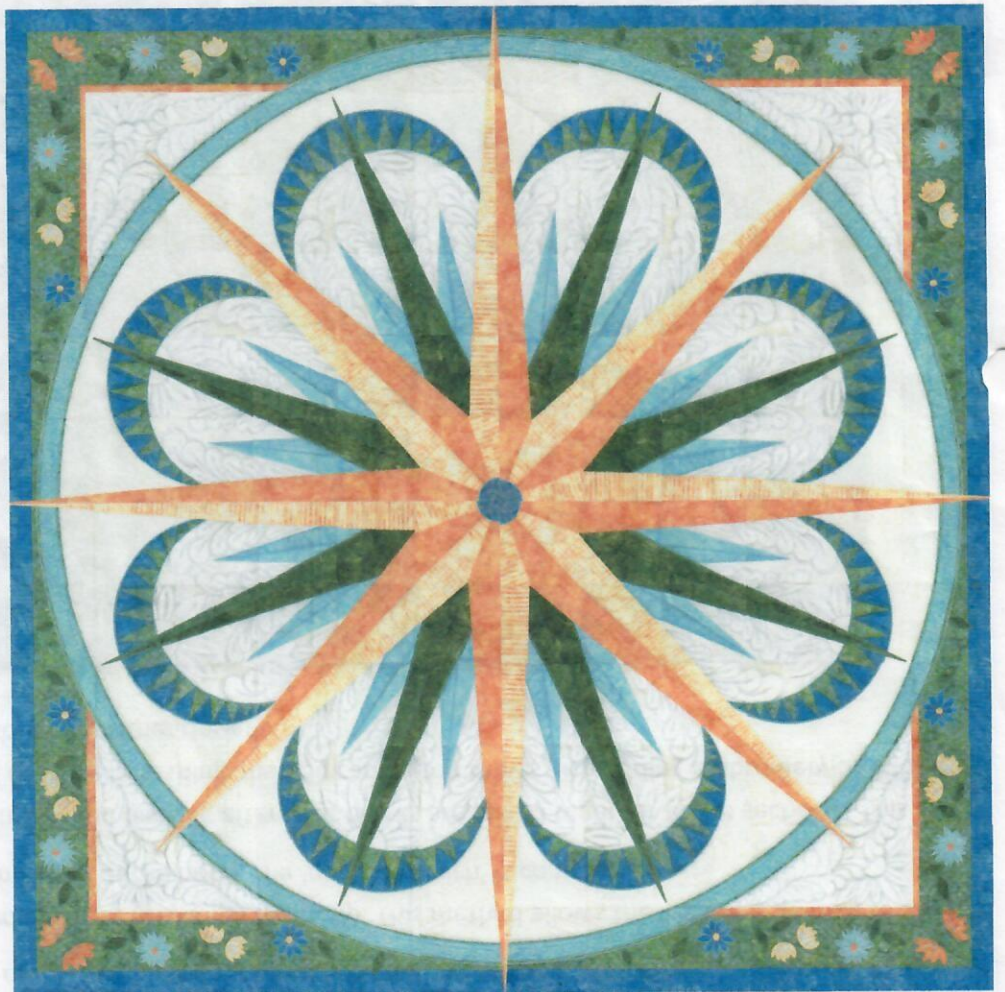


Hoop Sisters

SEE WHAT YOUR EMBROIDERY MACHINE CAN REALLY DO

Copyright © 2022 HoopSisters

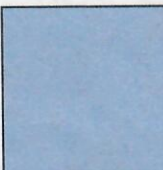
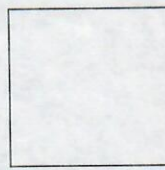





Quilt Front



NAVIGATOR
by HoopSisters



Navigator Fabric & Thread Key

<p>Fabric 4 Lt. Purple</p> 	<p>Fabric 7 White</p> 	<p>Fabric 3 Purple</p> 	<p>Fabric 6 Green</p> 	<p>Fabric 5 Lt. Green</p> 	<p>Fabric 2 Lt. Orange</p> 	<p>Fabric 1 Orange</p> 
--	---	--	--	---	---	--

For Backing Fabric, choose a print that has all or most of the colors in it.

For more Embroidablocks, please visit:
www.hoopisters.com

Photocopying, digitizing, and all other copying to "share" these instructions is strictly prohibited by law. Thank you for respecting the designer's copyright.

Hoop Sisters

SEE WHAT YOUR EMBROIDERY MACHINE CAN REALLY DO
Copyright © 2022 Hoop Sisters

Navigator Fabric and Thread Key

See Page 2 and pick one backing option. Your choice will determine how much yardage to buy for the Backing and Sashing Fabrics. Circle your choice in the Backing and Sashing Columns.

*Cutting for Backing Fabric During Assembly (Can be different colors or the same fabric)

- 10" Blocks, Cut 36-21" x 21"
- 9" Blocks, Cut 36-19" x 19"
- 8" Blocks, Cut 36-18" x 18"
- 7" Blocks, Cut 36-16" x 16"
- 6" Blocks, Cut 36-13" x 13"
- 5" Blocks, Cut 36-12" x 12"



10 inch Blocks	Approx Size: 120" x	Fabric 120" x	Fabric 5 (Set aside)	1 1/2 yd for (Piping)	Fabric 6	2 1/2 yd	10 yd	15 1/2 yd	10 1/2 yd	Option 2: Backing for blocks in hoop	Opt. 1: Sashing for quilt backed during Assembly	Binding	2-15 yd hoop size	Optional Wool	1 - King
9 inch Blocks	Approx Size: 105" x	Fabric 105" x	Fabric 5 (Set aside)	1 1/2 yd for (Piping)	Fabric 6	2 yd	6 3/4 yd	10 3/4 yd	9 1/2 yd	Option 2: Backing for blocks in hoop	Opt. 1: Sashing for quilt backed during Assembly	Binding	2-15 yd hoop size	Optional Wool	1 - Super Queen
8 inch Blocks	Approx Size: 93" x	Fabric 93" x	Fabric 5 (Set aside)	1 1/2 yd for (Piping)	Fabric 6	2 1/2 yd	6 3/4 yd	9 3/4 yd	9 1/4 yd	Option 2: Backing for blocks in hoop	Opt. 1: Sashing for quilt backed during Assembly	Binding	2-15 yd hoop size	Optional Wool	1 - Double
7 inch Blocks	Approx Size: 82" x	Fabric 82" x	Fabric 5 (Set aside)	1 yd for (Piping)	Fabric 6	2 yd	5 1/2 yd	7 1/2 yd	8 1/4 yd	Option 2: Backing for blocks in hoop	Opt. 1: Sashing for quilt backed during Assembly	Binding	2-15 yd hoop size	Optional Wool	1 - Double
6 inch Blocks	Approx Size: 69" x	Fabric 69" x	Fabric 5 (Set aside)	3/4 yd for (Piping)	Fabric 6	2 1/2 yd	3 3/4 yd	5 1/2 yd	4 1/2 yd	Option 2: Backing for blocks in hoop	Opt. 1: Sashing for quilt backed during Assembly	Binding	2-15 yd hoop size	Optional Wool	1 - Twin
5 inch Blocks	Approx Size: 58" x	Fabric 58" x	Fabric 5 (Set aside)	3/4 yd for (Piping)	Fabric 6	2 1/2 yd	3 3/4 yd	4 yd	4 1/4 yd	Option 2: Backing for blocks in hoop	Opt. 1: Sashing for quilt backed during Assembly	Binding	2-15 yd hoop size	Optional Wool	1 - Throw