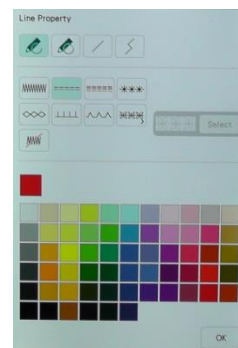
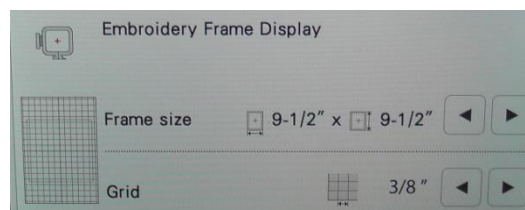


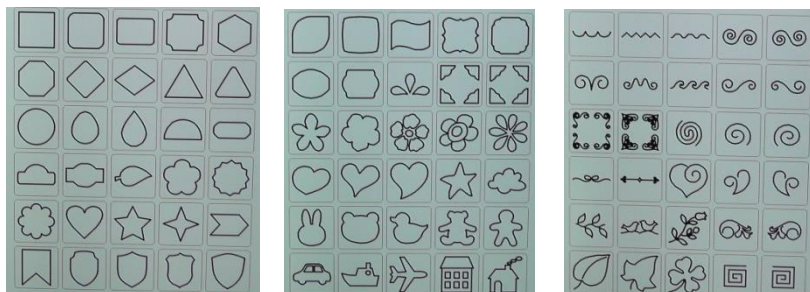
Set Up My Design Center Workspace

Open the My Design Center workspace and set up for creating quilting designs.

- Design for the size hoop desired. Go to Settings and select the hoop size. The perimeter of the hoop is displayed as a light grey line on the workspace. When creating the design, keep the design smaller than the hoop to allow for easy placement in moving and rotating the design.
- When creating a continuous quilt design that will join up side-to-side and/or top-to-bottom, choose a grid to display on the workspace. Use either the 1" or 3/8" grid.
- Before setting a shape or image to the workspace, choose the stitch type in the Line or Region properties menu. The stitch type of the shape can always be changed, but it is easier to bring in the artwork in the stitch type desired. For example, select the Double Run before selecting shapes and they will all be set on the screen in the desired stitch type.



Super Easy Quilt Design with Shapes



At the My Design Center workspace, select the Line Properties menu. In the new window, select the Double Run and a bright color. Select the Shapes icon. Look through the three different shapes pages to select a shape. In the video, the circle on the first page was selected. Touch the selected shape and

then OK. The shape appears on the workspace with a red square around it to indicate that it is “selected”. If you touch inside the workspace, the design will be “de-selected” and the red box will disappear. Without touching inside the workspace, select the Size icon. Change the size of the shape and use the move keys to place it within the size hoop desired.

When the Stellaire is connected with a Scan N Cut through My Connection, additional shapes from the Scan N Cut can be used to create designs.

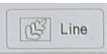


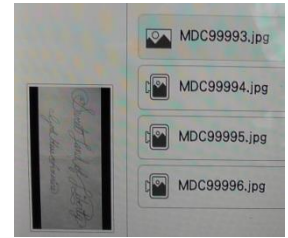
Add additional shapes by selecting the Shapes icon and choosing additional shapes. Remember to avoid touching the workspace or you will de-select the shape. Use the Size icon and/or the Rotate icon to modify the shape. To avoid trims and create a continuous line of quilting, position the shapes so they all touch each other at some point. When the shapes touch My Design Center will automatically create a continuous path along the designs.

Confident Beginner Quilt Design from Image

Select a printed quilting design from a book or other source. (Stars & Stripes by Julie Mullin was used in the video.) It is okay if the design has any additional wording or adjacent designs as they are simple to ignore once the image is sent to the machine. Place the printed design inside the embroidery hoop with the white and black stickers. The black and white stickers indicate size and position to the machine, so don't cover them with the paper. Use the My Design Snap app on your mobile device to send the image to My Design Center by selecting the “Snap Capture with frame for pattern editing”. If the image is too large for the hoop, take a photo of the image with the camera of the mobile device and send to My Design Center with the “Select Image for pattern editing” option within the app. Note that the design will be re-sized to fit the workspace automatically with this option. Any design created in My Design Center will be no larger than the largest hoop available for the machine.

At the My Design Center Workspace, select the No Sew option after selecting the Line Properties menu. By selecting the No Sew option, the desired image and any additional

images will be traced as artwork and we can decide what becomes a quilt design. Touch OK to return to the workspace. Select  Line and then the artwork picture sent from the app. The latest image is at the top of the list. Select Set and then crop the image to remove any unwanted artwork. Review the traced image. Use the slider and Retry if the image looks very incomplete. Send the best image to the workspace.



Review the image again when it is on the workspace. It will be a light grey color to indicate that it has the No Sew stitch type. Magnify the image to check for breaks and move around the artwork using the red box in the small image in the upper right of the screen. To create a continuous line, repair any breaks in the line using the drawing tool and erase any extra double or unnecessary lines. **Save the artwork** to recall later to make any modifications in the design.

Select the Line Properties menu, the Double Run stitch and a bright color. Touch the cup and then the artwork. If the entire artwork did not change color, use the Undo key and repair the break with the drawing tool and No Sew stitch type. Retry to fill the design with the Double Run stitch type. Send the completed design to the machine. Note that this design can be modified as any embroidery design can be modified with the Size, Rotate, Duplicate and Border Function keys.

Wow, Let's Take This to the Next Level

Continuous quilting designs connect when stitched side to side or top to bottom. They can also be nested together when stitched in rows. For an idea of continuous designs, look for many resources in books and on the internet such as the image right. To connect, the designs must begin and end at the same relative location on the sides or the top and bottom. Use a grid to assist in placing the designs to touch each other when embroidered. Select the 1" or 3/8" grid in the settings menu. Create the design using shapes or imported line artwork as above, but place the artwork so that it ends at the same location on the sides or top and bottom.



Keep the following in mind when creating these designs:

- A through line that continues to the next embroidery is a line (or shape) that partially ends at the sides and/or top and bottom. Designs can be easily “split” by using the selection tool and selecting only part of the design and then moving it away.
- When creating complex designs, consider creating separate artwork for each shape and placing them in the memory of the machine separately. After all the individual artwork has been created, recall the individual artwork one at a time to create the continuous design.
- A nested design overlaps the previous line of stitching and often resembles a serpentine pattern. The design is often stitched in a brick pattern so the design below is moved $\frac{1}{2}$ horizontally from the design above. It is best to pre-draw a plan for creating these complicated designs. Note that a partial $\frac{1}{2}$ design is needed for both the beginning and end of alternate rows.
- **Save your artwork often!** Artwork saved to a USB drive and kept with the project makes modifications for special quilting situations (such as a short row at the sides or bottom of a quilt) simple.
- Check your design by sending the design to embroidery and reducing the design as small as possible. Duplicate the reduced design and move the design to check the connection points.

