

Reversible Placemats for Baby Lock Applaud

April 16th, 2025

Supplies

- Baby Lock Applaud Decorative Cover Stitch Machine
- UltraT Serger Foot
- (4) 11" x 18" pieces firm batting such as Insulbrite, Warm and Natural or Foam (fusible is preferred, but optional)
- 2 ½" fabric strips in two to eight color combinations
- 2 ½" fabric strips for binding
- (2) Serger threads for piecing
- Decorative threads for quilting from 12 wt. to 6 wt.
- Rotary Cutter, Mat and Ruler
- Long Pins
- Iron

Instructions

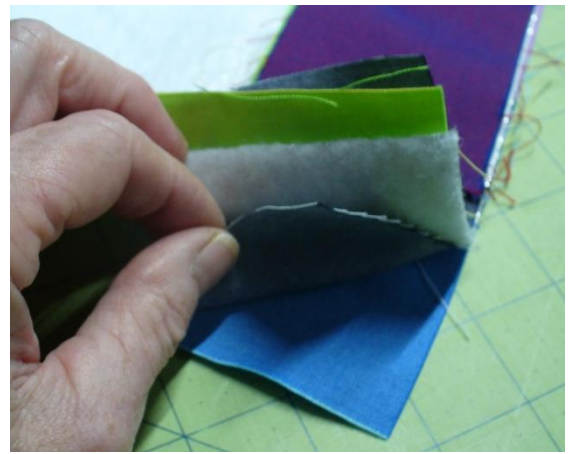
Stitch N Flip Piecing

Set up Applaud for chain stitch using any of the three available needle positions and thread with serger thread. Attach the UltraT serger foot. Set the stitch length for 3.5 to 4.

Piece the short ends of 2 ½" strips to create eight (8) sets for each placemat. Each pieced strip should be about 1" wider than the width of the placemat base. Cutting the size of the pieces the same or random is designer's choice.



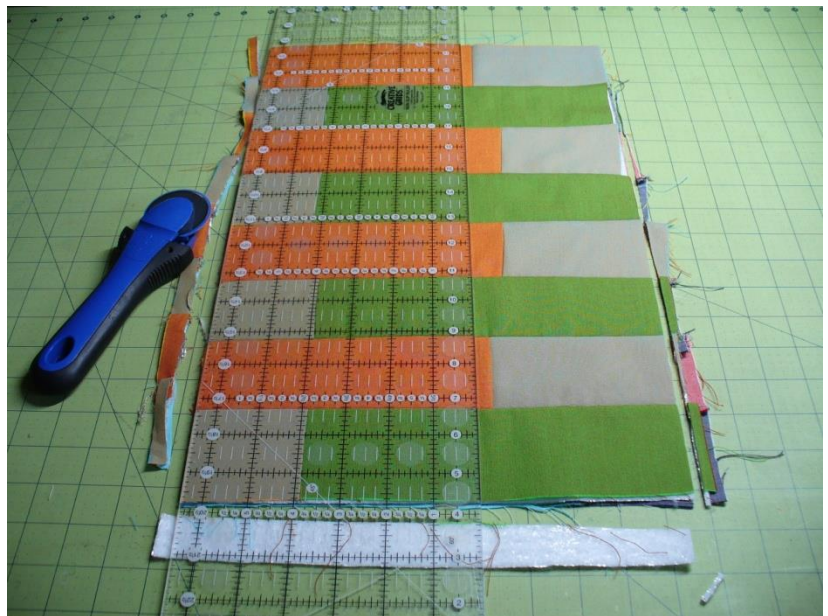
Lay the first strip for one side on the end of the base with raw edges even and right side up. Lay the second strip for the same side right-side down directly on top of the first. Pin the strips down through all layers. Turn the placemat over and repeat with the second side strips on the same end. Align the raw edges of the pieces to match on both sides. Check that the strips are straight on the base. Move pins to this side and pin through all layers. The piece will be thick with four layers of fabric and the placemat base in the middle.



Stitch a $\frac{3}{8}$ " seam through all layers. Check that the seam in the back caught the fabric. If the seam is too small, re-stitch from this side. Stitching a slightly larger seam is okay with this project and will not affect the outcome.

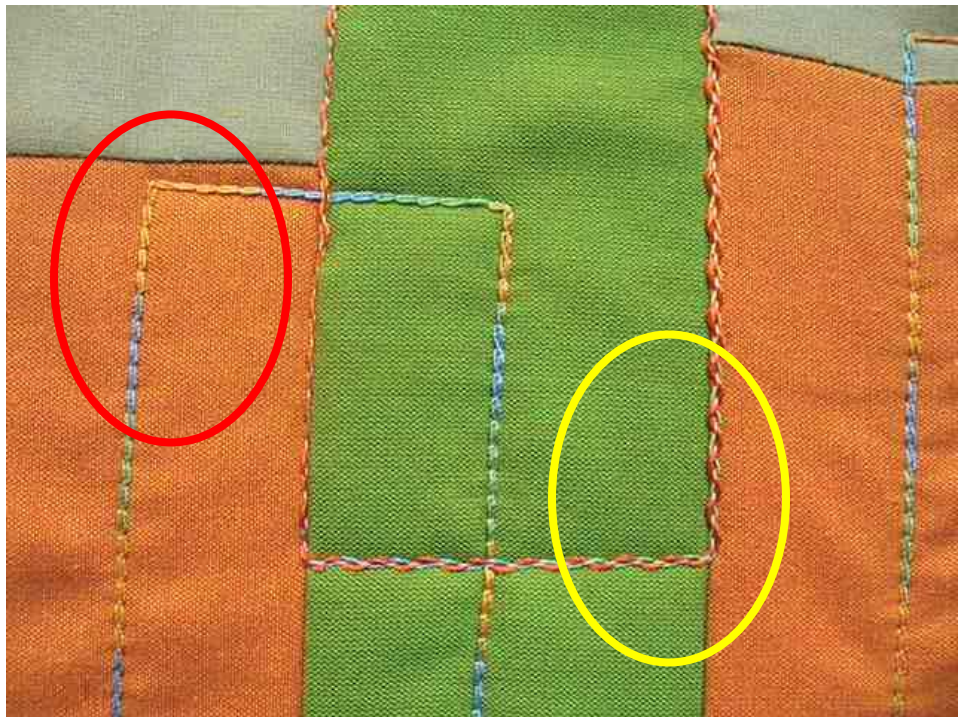
Flip the top strips out on both sides and press. A well-pressed seam is very important to this project. Don't skip this step. Continue adding strips to both sides in the same manner to cover the entire placemat base. There is extra base fabric at the end to allow for error.

Completely piece all four placemats. Trim around the covered base making all four placemats the same size.



Creative Double-Sided Quilting

The Applaud is a decorative cover stitch machine. The decorative chain stitch on the top and cover looper side of the underside are both decorative and look different. Use this feature to create two coordinating stitch types when quilting the placemats by changing threads and turning project over after quilting one side.



Change the machine to decorative chain stitch. Remove the standard ankle and UltraT serger foot and replace with the wiper foot. Thread the cover stitch looper with a 12 wt. decorative thread to match one side of the placemat. This stitch looks like the stitching in the red oval in the photo above. Thread the needle with serger thread and decorative threads in the wipers to coordinate with the other side of the placemat. This stitch look like the stitching in the yellow oval in the photo above, Stitch a sample of this thread combination and adjust the stitch length and cover stitch setting as necessary.

Select the needle down option. Stitch with the decorative chain stitch side up and stitch random lines on the placemat through all layers. Re-thread machine to coordinate the 12 wt. cover looper thread with the other side of the placemat. Re-thread the decorative chain stitch threads to coordinate the other side. Turn placemat over and stitch random lines through all layers.

Bind the placemats and try to choose a favorite side for setting the table tonight!