

---

## Products Shown in Video

- Quarter Inch Foot with Guide (Baby Lock #ESG-QGF)
- Wider Quarter Inch Foot with Guide (Baby Lock #BLSO-QF)
- Compact Dual Feed Foot or Digital Dual Feed (Brother #SA209)
- Quarter Inch Sole for Digital Dual Feed (Baby Lock #BLDY-QFDF)
- Right Guide Bar and Adaptor for Digital Dual Feed (Baby Lock #BLDY-QGDF)
- Left Guide Bar and Adaptor for Digital Dual Feed (Baby Lock #BLDY-LQGDF)

### ***Quarter Inch Foot with Guide***

The quarter inch foot with guide is a snap-on foot that fits both low-shank and high-shank Brother and Baby Lock machines. This foot is included with many top-of-the-line machines. The foot has a single opening for the needle and must be used with the needle in the center needle position. A metal guide extends from the front of the foot and presses against the needle plate of the machine. A version with a wider profile is available. The wider foot allows more contact with the feed dogs for better fabric control. While sewing, keep the raw edges of the fabric against the guide. Be careful to avoid catching stray fabric or loose threads in the guide. The metal can be bent out of



alignment or raised from the bed of the machine. Gently re-position the metal guide back into position if it comes out of alignment.

### ***Digital Dual Feed or Dual Feed Attachment for Baby Lock or Brother***



The Digital Dual Feed (Baby Lock) or Dual Feed Foot (Brother) accessory when attached feeds the fabric directly the top layer of fabric under the foot while the feed dogs feed the fabric on the bottom. The band is in constant contact with the upper fabric and moves the fabric with a separate motor within the accessory. The attachment plugs into the back of the machine and the speed of the band moves dependent of the speed of the machine and any adjustment selected in the settings. The band is adjustable in the settings to feed more or less fabric than the feed dogs. Use the adjustment to

control difficult to piece fabrics that would feed unevenly. The current version of this foot is smaller than the original and is called the “Compact”. Both the older version and the current version work equally well. A lever on the right side of the foot raises the band to disengage it.

### ***Specialty Soles (Feet) Digital Dual Feed or Dual Feed Attachment***

Different feet “sole” snap into the attachment. The attachment is packed with a standard sole and different variations are available. Currently the specialty soles available are:

- Stitch in the Ditch Guide
- Quarter Inch Guide (shown right)
- Cording
- Open Toe



The quarter inch sole has a metal guide extending from the front of the foot. The guide presses against the needle plate at the ¼” mark when the needle is in the center position. When sewing, the raw edges of the fabrics flow along the guide to maintain a scant quarter inch seam. The needle position is adjustable to customize the seam depth. The band is effective at controlling the fabric to keep it aligned and passing consistently under the needle.

## *Sewing Guides for Digital Dual Feed or Dual Feed Attachment*



Also available for the attachment are sewing guides for both the left and right sides of the foot. (The right guide is used in the video.) The small adaptor clamp attaches to the top of the foot and the guide slides in. The adaptor remains on the attachment after the guide is removed. The guide is adjustable manually and extends to 2 ½". The guides are useful for grid quilting, deep hems and border quilting. Place the guide directly in front of the quarter inch sole guide to extend the guide.

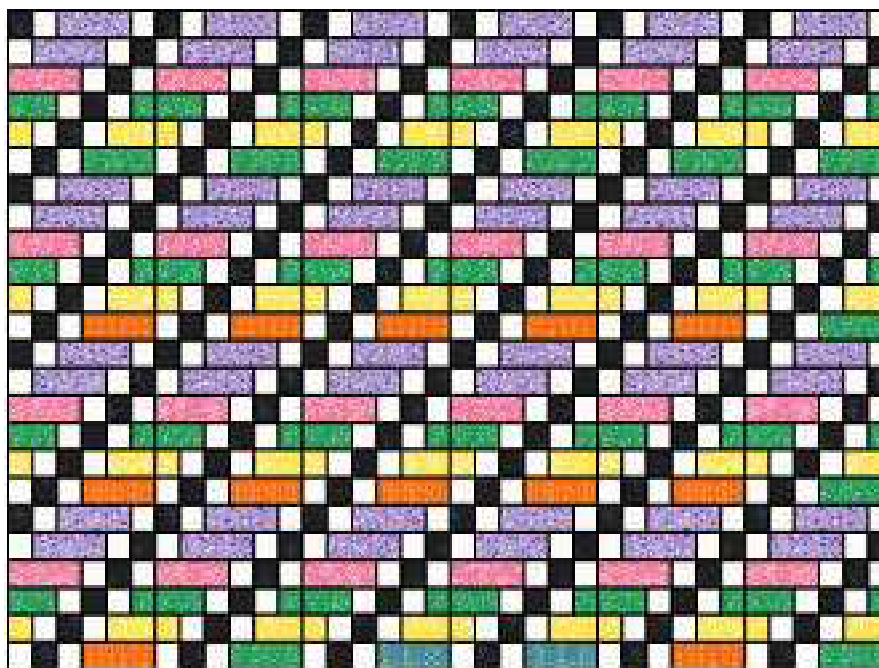
To determine ideal needle position seam two 2 ½" squares. Open the squares and press seam to one side. Measuring from raw edge to raw edge the seamed piece should measure 2 ½" x 4 ½". Adjust needle position if the measurement is different and re-sample.



## *Background Quilt Shown In Video*

Pieces cut from Jelly Roll:

- Assorted strips  $2\frac{1}{2}" \times 6\frac{1}{2}"$
- White Squares  $2\frac{1}{2}"$
- Black Squares  $2\frac{1}{2}"$



In diagram left, all pieces with color are  $2\frac{1}{2}" \times 6\frac{1}{2}"$  except for edge pieces. Edge pieces are  $2\frac{1}{2}" \times 2\frac{1}{2}"$  and  $2\frac{1}{2}" \times 4\frac{1}{2}"$ .